

# **Tutorial Flight**

## **Instructions and Reference**

### **Boeing 747 LCF Dreamlifter**

**Microsoft Flight Simulator**

**November 2024**



Edition: First

Released: November 2024

This manual has been written and compiled by Working Title

Images Copyright © the Microsoft Corporation

## Contents

Contents .....	3
Boeing 747 LCF Dreamlifter Tutorial Flight .....	6
Routes flown by the real aircraft.....	6
Please Note the Following Before Flying.....	7
Suggested autopilot key binds .....	7
No APU on the LCF, Air Start Carts are necessary for startup .....	7
Ensure that the engine covers are removed .....	7
Getting Started with the World Map: .....	8
Cold & Dark: .....	10
How to move around the plane? .....	10
Walkaround interactions.....	10
Always remove engine covers, pitot tube covers and wheel chocks .....	10
Other checks .....	11
Enter the cockpit .....	11
Cockpit Intro.....	11
Glareshield .....	13
Autopilot Mode Control Panel (MCP) .....	14
Speed Knob (rotate and push) .....	14
Heading Knob (inner rotate, outer rotate and push) .....	14
Altitude Knob (rotate and push) .....	15
MFD Control Panel .....	15
Overhead Panel.....	16
Sim Checklists.....	17
POWER Checklist.....	18
PREFLIGHT Checklist (Abbreviated) .....	18
CDU Setup .....	19
Pushback and Engine Start.....	27
Pushback & Engine Start – Abbreviated Checklist .....	27
FUEL TANK/ENG: .....	27
After Start/Pushback – Abbreviated Checklist .....	28
Takeoff.....	29

Before Takeoff – Abbreviated Checklist .....	29
Takeoff – Abbreviated Checklist .....	31
Climb .....	32
After Takeoff – Abbreviated Checklist .....	32
Cruise .....	34
Cruise – Abbreviated Checklist.....	34
Descent .....	38
DESCENT Checklist .....	38
Approach.....	39
Final Approach – Abbreviated Checklist .....	40
Taxi and Parking .....	43
After Landing – Abbreviated Checklist .....	43
747 Fuel System Addendum .....	44
Fueling priority .....	44
Stages in flight .....	44
Fuel in center tank .....	45
Takeoff configuration with fuel in the center tank.....	46
Center tank empty .....	46
Tank-to-Engine .....	48
Reserve tanks .....	49
Procedures .....	50
Electrical Power Up .....	50
Preflight Procedure – First Officer.....	50
Preflight Procedure – Captain .....	54
Before Start Procedure.....	56
Engine Start Procedure .....	57
After Start Procedure .....	58
Before Takeoff Procedure.....	59
Takeoff Procedure .....	59
AFTER TAKEOFF checklist .....	59
Climb and Cruise Procedure.....	60
Approach and Landing Procedure.....	60
Go–Around Procedure .....	60

Landing Roll Procedure ..... 60

After Landing Procedure ..... 61

Shutdown Procedure ..... 61

SHUTDOWN checklist..... 61

Secure Procedure ..... 62

SECURE checklist ..... 62

## Boeing 747 LCF Dreamlifter Tutorial Flight

This tutorial flight will familiarize you with the normal operations of the MSFS Boeing 747-LCF (Dreamlifter), from gate to gate. Today's flight will be from Chicago O'Hare Airport (KORD) to Washington Dulles Airport (KIAD), and we will be carrying a 2/3rds full cargo load of 270,717 lbs. (122,795 kg).

Origin	KORD	Chicago
Destination	KIAD	Washington
Route	KORD MOBLE ADIME ASHEN J60 DJB J162 MGW GIBBZ4 KIAD	
Cruise Altitude	37,000 ft	11,277 m
Distance	590 NM	1093 km
Alternate airport	KPHL	Philadelphia
Passengers	2 = 400 lbs.	2 = 187 kg
Liquid	10,084 gal	84,155 lbs.
Trip Fuel	25,916 lbs.	11,755 kg
Holding/Contingency:	9,530 lbs.	4,322 kg
Alternate	11,874 lbs.	5,385 kg
Reserve:	13,762 lbs.	6,242 kg
Taxi:	2,000 lbs.	907 kg
Block Fuel:	63,082 lbs	28,613 kg

### Routes flown by the real aircraft

As the real aircraft is used almost exclusively to carry aircraft sub-assemblies between several Boeing factories across the whole earth, the route network flown daily is very limited. There are exactly 6 airports, which are regularly visited by an LCF aircraft:

- RJGG Nagoya, Japan
- PANC Anchorage, AK, United States
- KPAE Everett, WA, United States
- KIAB Wichita, KS, United States
- KCHS Charleston, SC, United States
- LIBG Taranto-Grottaglie, Italy



## **Please Note the Following Before Flying**

### **Suggested autopilot key binds**

Boeing 747 does not have a button that would perform a similar action to “TOGGLE AUTOPILOT MASTER” key bind in MSFS. The real-world autopilot cannot be toggled using a single control. Instead, the 747s have separate buttons for engaging and disconnecting the autopilot.

When disconnecting autopilot, a CAS warning “AUTOPILOT DISC” will be triggered, and the only way to clear it is by pressing an autopilot disconnect button again. The master warning button on the glareshield will not clear this warning.

It is recommended to set up two separate key binds, one for AUTOPILOT ON, and another for AUTOPILOT OFF, so that you can clear the warning by double pressing the AUTOPILOT OFF key.

If you only have a key bound to toggling autopilot, then you will not be able to clear the message, because a second press will engage autopilot.

### **No APU on the LCF, Air Start Carts are necessary for startup**

Due to the swing-tail on the 747-400 Dreamlifter, the aircraft contains no Auxiliary Power Unit (APU). As a result, there is no standalone supply of electrical power (besides the short-lived battery) and the bleed pressure used for engine starts must come from the Air Start Carts.

Therefore, you need to choose a gate at the airport which offers External Power capability.

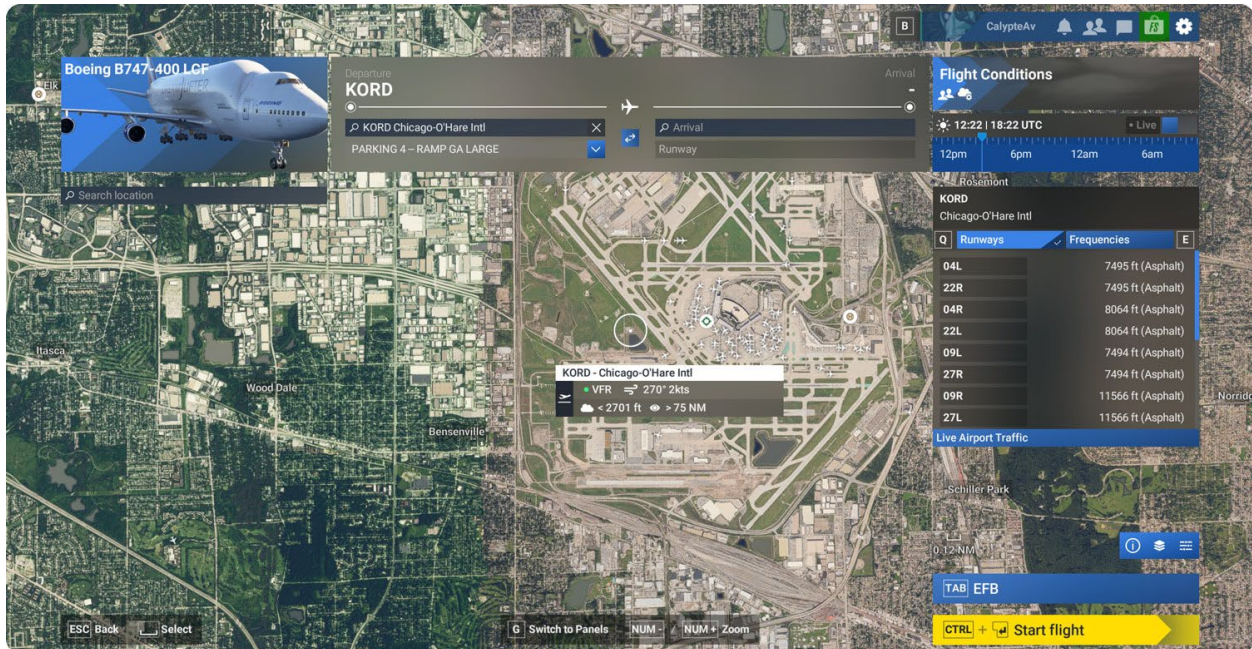
To enable the Air Start Carts, use the Settings menu in the CDU or follow the pre-flight checklist procedures which are described later in this document. To access the Settings menu, press the MENU button on the CDU and then select SETTINGS with the line select key.

### **Ensure that the engine covers are removed**

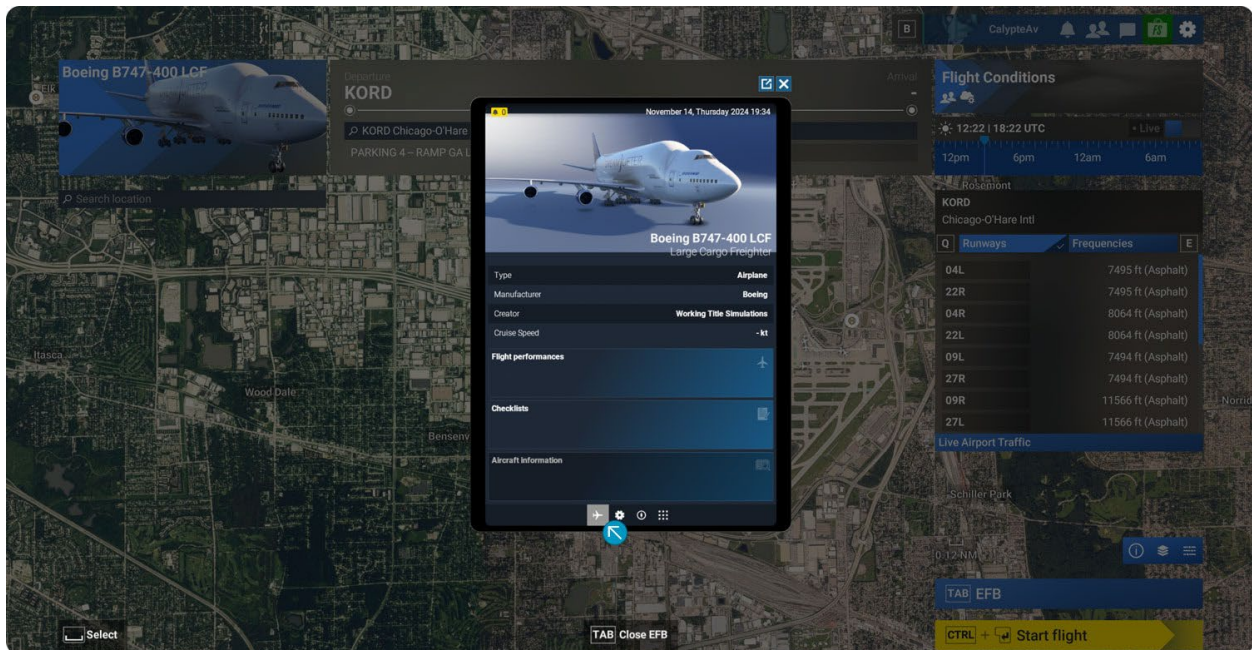
When starting from Cold and Dark, you must ensure that the engine covers have been removed. Failing to remove the engine covers will cause the engines to appear to start, where they will reach approx. 10% N1 but never sustain combustion.

To remove the covers, move towards one of the engines and click on the cover.

## Getting Started with the World Map:



Select the Boeing B747-400 LCF in the aircraft selection menu. Then open the EFB by either clicking on it in the lower right-hand corner, or by pressing the TAB key.

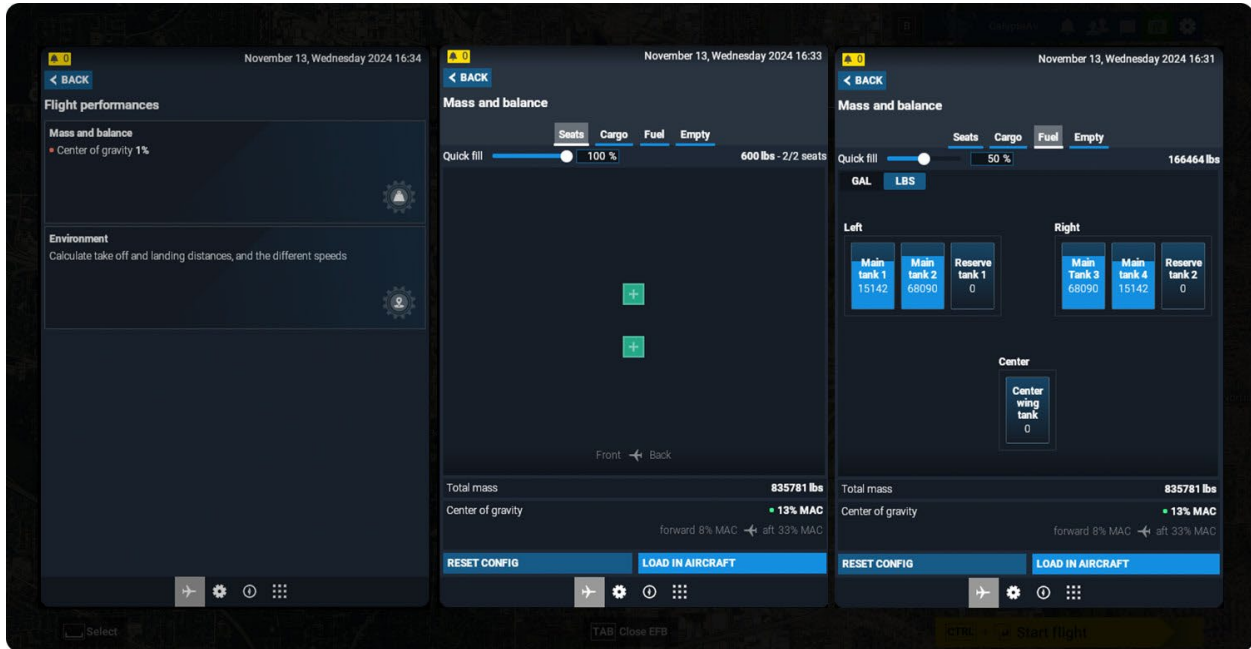


Click on Aircraft, then flight performance, then the mass and balance section, and enter the seats, cargo, and fuel. Note that we are working in pounds, so you may need to toggle the unit selector in the upper left to select LBS. When entering the fuel amounts, you will probably want to type them manually in the boxes. When entering the payload weights, you may want to type in the weights into each box so that you

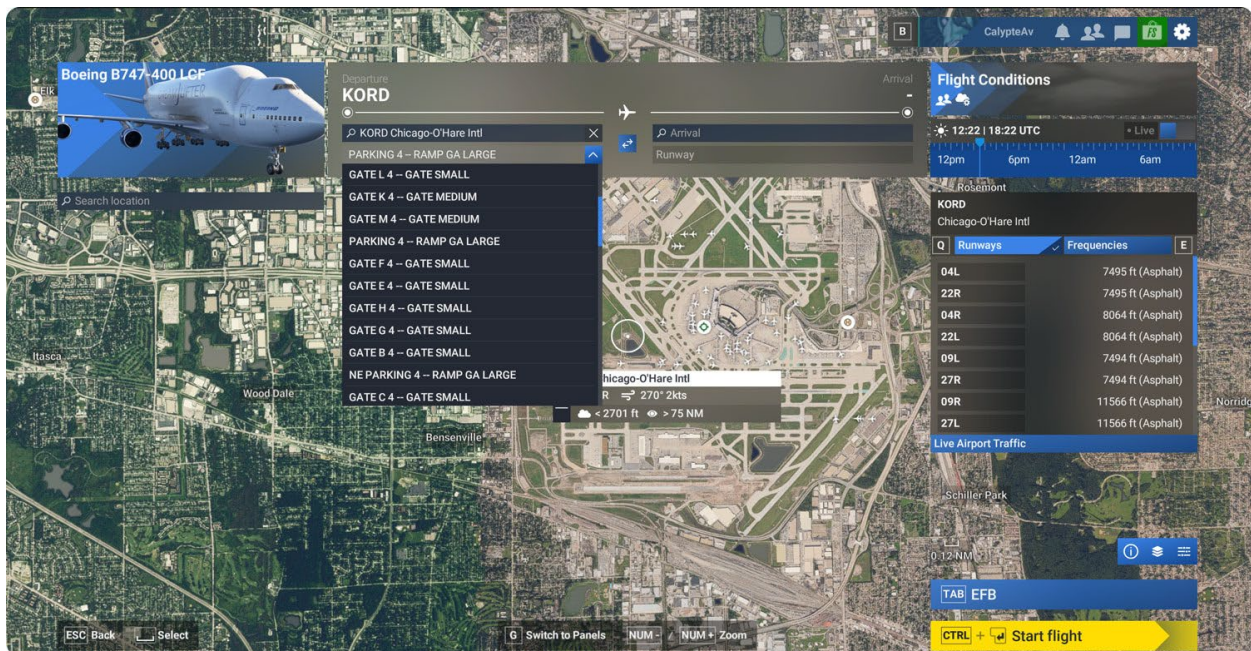


will get a more accurate CG (center of gravity), and not have to click the “+” a million times. After entering the weights, your page should look like the image below. Click the “LOAD IN AIRCRAFT” when finished.

Pay special attention to the Center of Gravity when loading a large aircraft like the 747, as loading out of limits can cause the aircraft to be unflyable and cause errors when programming the aircraft systems. You can use the Empty CG Position slider to adjust the Center of gravity if needed after loading the aircraft.



For the world map flight plan, select KORD as the departure airport, select “PARKING 7 – RAMP GA LARGE” as the spawn point, set the time of day if desired, then click Start Flight:



## Cold & Dark:

### How to move around the plane?

The aircraft will be powered down and you will be starting outside ready to perform the preflight walkaround of the aircraft. Use your directional keys (W-A-S-D) to walk around, and arrow keys to look around. Familiarize yourself with the exterior of the aircraft.

### Walkaround interactions

Notice as you walk around you will see small dots appear on things that can be hovered over and interacted with. These things include the landing gear components, flaps, ailerons, engine covers, wheel chocks, pitot tube covers, elevators, rudder, and some doors. You must be close enough to the dot (Not too close) for the interaction to activate.

### Always remove engine covers, pitot tube covers and wheel chocks

At a bare minimum, you will want to do the following:

- Remove the red engine covers by walking up to one of them, closely enough to highlight when your mouse hovers over it and clicking on it. The engine covers should all disappear.
- Do the same for any of the red pitot covers.
- Remove the Chocks.



**Note:** When starting from Cold and Dark, you **must ensure that the engine covers have been removed.** Failing to remove the engine covers will cause the engines to appear to start, where they will reach ~10% N1 but never sustain combustion.

## Other checks

The only things you are required to do to start and operate the aircraft is remove the wheel chocks, engine covers, and pitot tube covers (Currently missing in the model art, so this is not needed in this case). You can skip the gear and flight surface checks if you prefer.

## Enter the cockpit

Walk to the main door until you are close enough to highlight it, then click on the door to board the aircraft, and enter the cockpit. To quickly enter or exit the cockpit, press *Shift-C*.



Once in the cockpit, take a moment to familiarize yourself with the cockpit panels and screens before you get started with the cockpit setup checklist.

## Cockpit Intro

There are six primary display screens in the 747 cockpit – two primary flight displays (PFD), three multi-function displays (MFD) and one central Engine Indicating and Crew Alerting System (EICAS) display.

The PFDs contain the primary flight instruments, including the attitude indicator, heading indicator, altimeter, airspeed indicator and the autopilot/flight director mode annunciator (FMA).

Each MFD can display a variety of data including the navigation display (map), checklists, systems synoptics and secondary engine information; the pilots can control the contents displayed on each MFD through the MFD control panel on the glareshield.

In addition, there are three control data units (CDU) that provide an interface to the flight management computer (FMC). In MSFS, the two primary CDUs located on either side of the lower MFD operate



independently and can be used; the third CDU located at the aft of the center pedestal is a mirror of the captain-side CDU and is a display only.

**Glareshield** - Above the displays, **outlined in red** below is the glareshield panel, which contains the autopilot mode control panel (MCP), the MFD control panel, the navigation display (ND) controls and the PFD input controls.

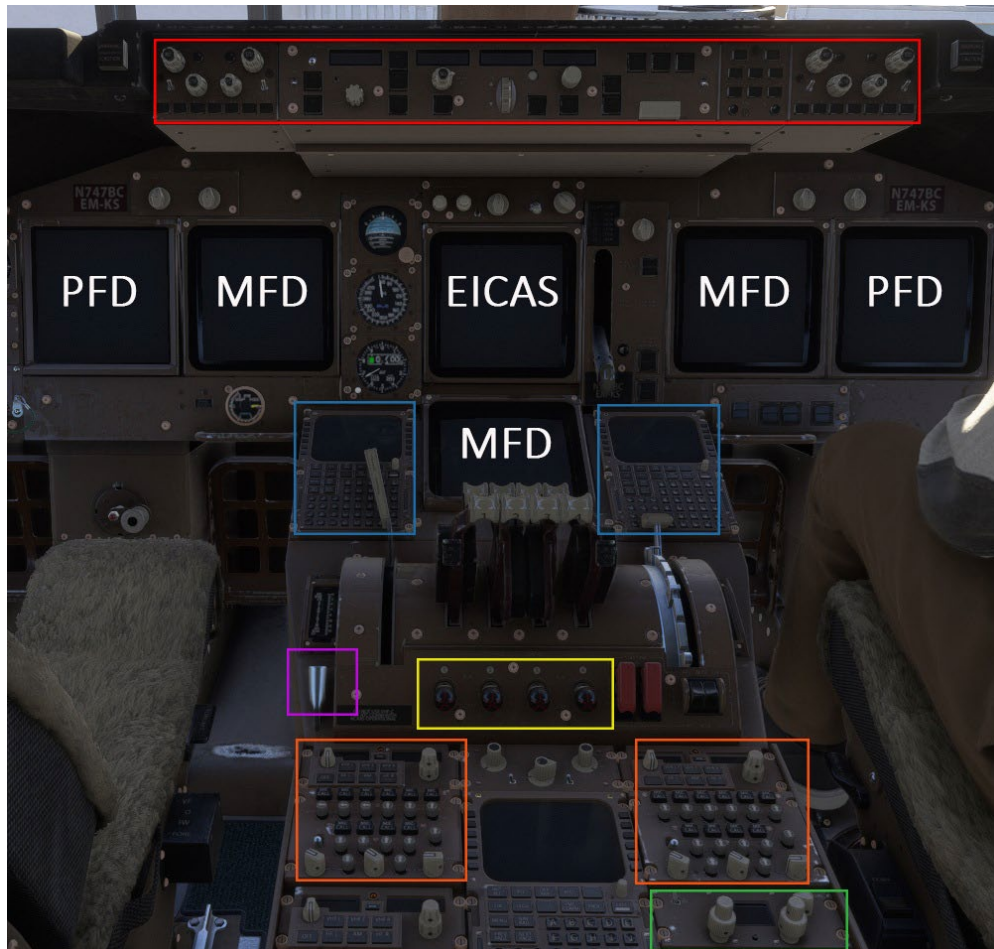
**CDU** – On either side of the lower MFD, **outlined in blue** below, there are two CDUs – these provide a flight computer interface, one each for the pilot and co-pilot.

**Radio Tuning Control** – On the pedestal between the pilot seats, **outlined in orange** below, there are the pilot and co-pilot radio tuning panels – these provide input for the aircraft radios.

**Fuel Control Switches** – On the pedestal below and behind the throttles, **outlined in yellow** below, are the fuel control switches for the engines – these are the master switches controlling whether the engines can run or not.

**Parking Brake Handle** – On the pedestal to the left of the throttles, **outlined in purple** below, is the parking brake handle. Pull up/back to set the parking brake, push down/forward to release the parking brake.

**Transponder Control** – On the pedestal below the co-pilot radio panel, **outlined in green** below, is the transponder control panel.



## Glareshield

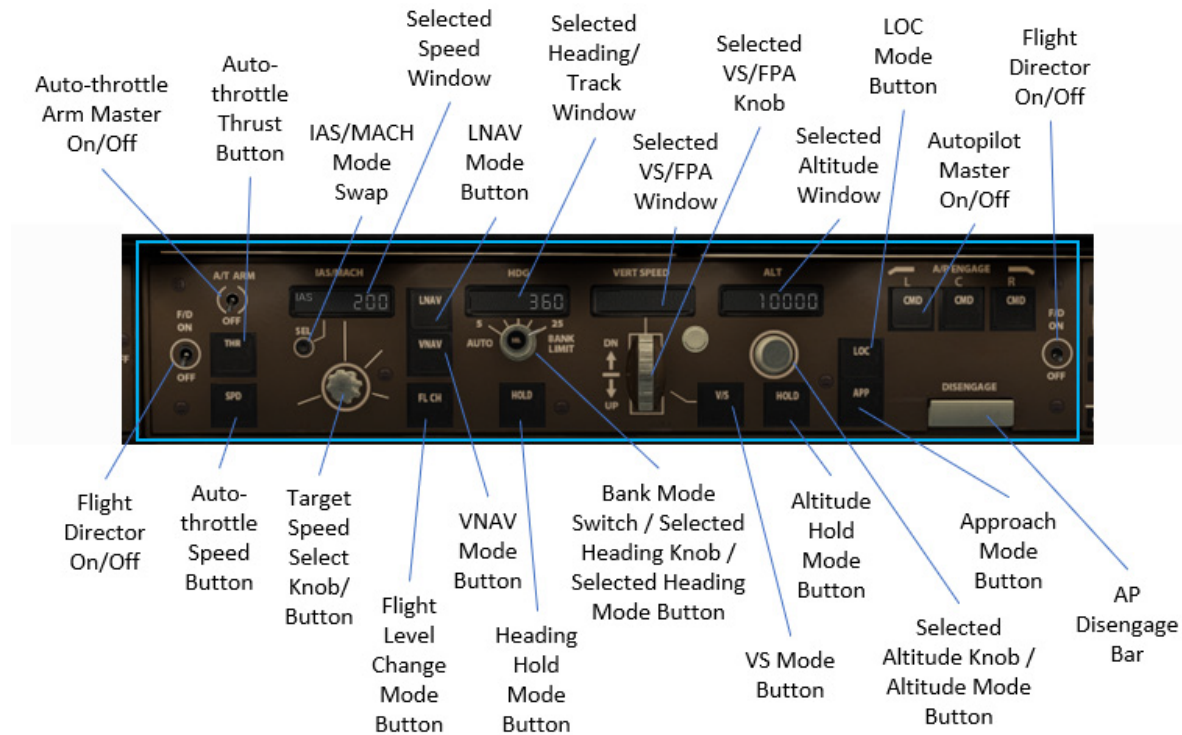


The glareshield comprises two central/shared control panels and two side-specific control panels on each side.


- 1. Autopilot Mode Control panel (MCP)**  
This is the control panel for all autopilot and auto-throttle functions.
- 2. MFD Control Panel**  
This panel controls what is displayed on each of the three MFDs.
- 3. PFD Control Panel**  
Provides pilot input for approach minimums and altimeter barometric pressure setting, as well as mode buttons for altimeter meters display and the flight path vector (FPV) display.
- 4. ND Control Panel**  
Provides pilot input for any Navigation Display (ND [map]) on the MFD, including knobs for range and mode, as well as toggle buttons for various data display options.

## Autopilot Mode Control Panel (MCP)

The Autopilot Mode Control Panel is the primary interface for interacting with the autopilot and auto-throttle. The MCP allows the pilots to command the various modes of the autopilot.



	<p><b>Speed Knob (rotate and push)</b></p> <p>Rotate: Rotating the knob changes the selected speed or selected Mach when the Selected Speed Window is open (displayed).</p> <p>Push: Pushing in on the button will toggle the Selected Speed Window when VNAV mode is active. By default, with VNAV mode active, the window will close (no display visible); pressing the button will cause the window to open and allow the target speed value to be changed by rotating the knob.</p>
	<p><b>Heading Knob (inner rotate, outer rotate and push)</b></p> <p>Inner Rotate: Rotating the inner knob changes the selected heading or track; the selected value will be displayed in the Selected Heading/Track Window.</p> <p>Outer Rotate: Rotating the outer knob changes the bank limit (in degrees) to be used when in Selected Heading mode. By default, this should be set to AUTO but can be manually set to values from 5 degrees to 25 degrees with 5-degree increments.</p> <p>Push: Pushing in on the button will activate Selected Heading mode.</p>

	<p><b>Altitude Knob (rotate and push)</b></p> <p>Rotate: Rotating the knob changes the selected altitude; the selected value will be displayed in the Selected Altitude Window. The knob has knob-turn acceleration allowing a minimum increment of 100' and max of 1000'.</p> <p>Push: Pushing in on the button has several functions when in VNAV mode. Generally, the first press of the button will initiate a climb or descent, in VNAV SPD mode to the altitude displayed in the Selected Altitude Window. Subsequent presses of the button will delete altitude constraints in the current phase of flight (climb or descent).</p>
---	---

## MFD Control Panel

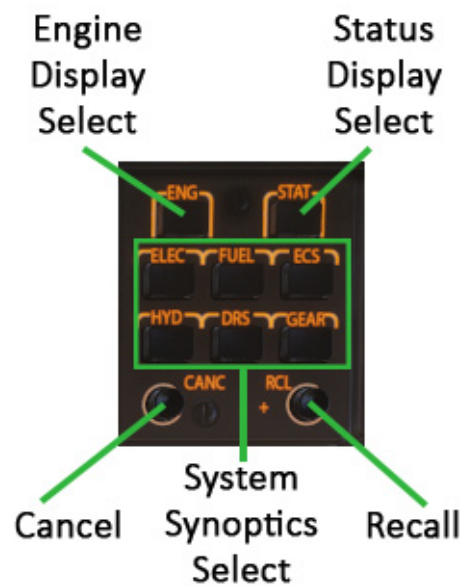
The MFD Control Panel located on the glareshield to the right of the Autopilot MCP is the interface for selecting the content displayed on each of the MFDs.

**Engine Display Select:** Pressing this button will cause the secondary engine display page to appear on the currently selected MFD.

**Status Display Select:** Pressing this button will cause the status display page to appear on the currently selected MFD.

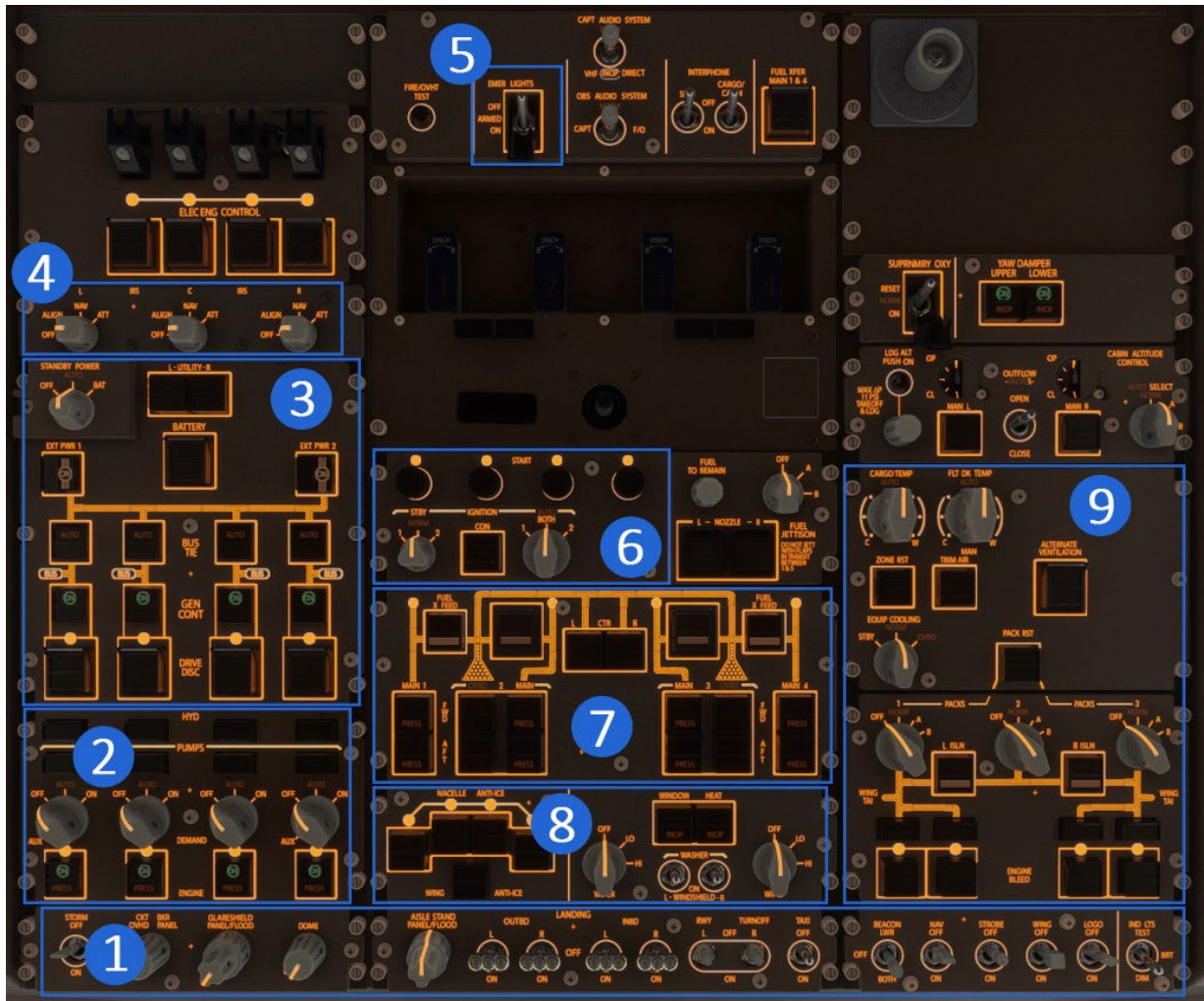
**System Synoptics Select:** There are eight synoptics display buttons available. Pressing any of these will cause the selected item to display on the currently selected MFD.

**Cancel/Recall:** These will cancel or recall messages that have appeared on the EICAS MFD.





# Overhead Panel



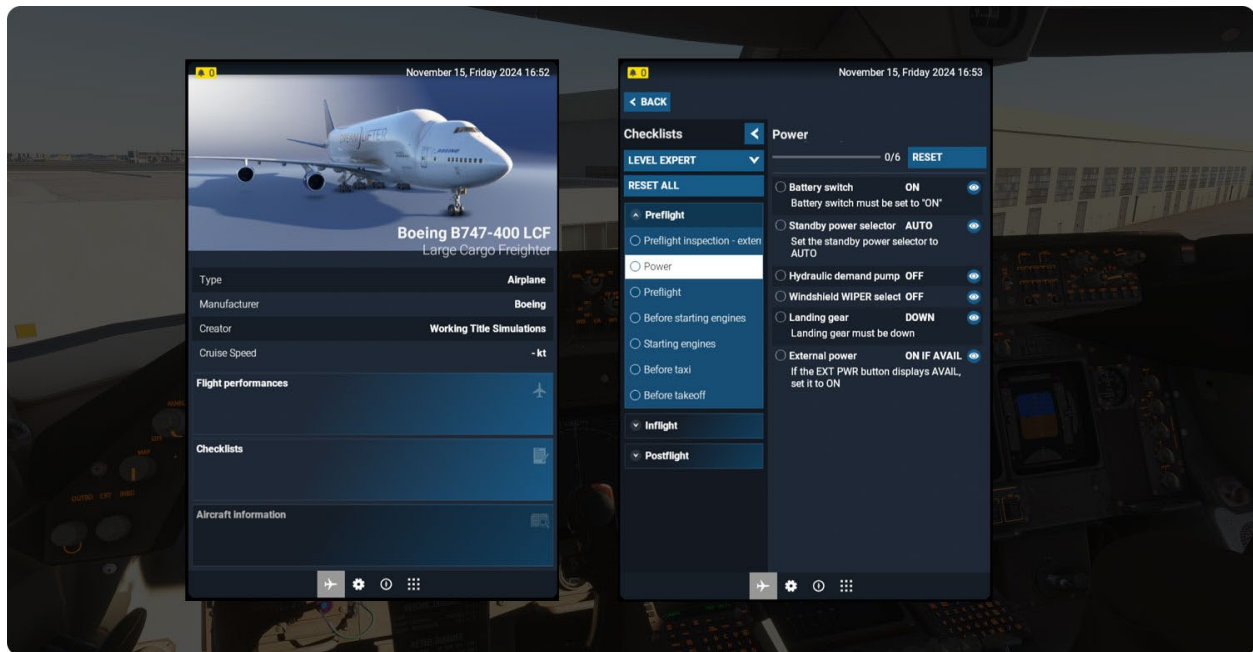
1 – Lighting Panel	Controls for cockpit and exterior aircraft lighting.
2 – Hydraulic Panel	Controls for the aircraft hydraulic system.
3 – Electrical Panel	Controls for the battery, external power and generators.
4 – IRS Panel	Controls for the IRS.
5 – Emergency Lights	Control for the emergency lights.
6 – Engine Panel	Controls for the engine start system.
7 – Fuel Panel	Controls for the fuel system.
8 – Anti-Ice/Window Panel	Controls for anti-ice systems and window heat/wiper systems.
9 – Air Conditioning Panel	Controls for cabin air and engine-driven air conditioning packs.




## Sim Checklists

All Checklists are contained within the EFB. The ones in this tutorial may be slightly different for the sake of the tutorial, so in addition to this tutorial, it is recommended to check out the sim checklists as well. They can be accessed by pressing "TAB" and then the aircraft icon in the EFB. The preflight checklists can also be done while doing the preflight walkaround outside, if desired.

In the EFB, Browse to Aircraft -> Checklists.



Check off *each item* on the checklist by either navigating to the item manually, or by clicking the  on each item to auto-focus it, and then completing the task. Using the *Battery Switch* checklist task as an example:



Complete the Preflight, Before starting engines, Starting engines, Before taxi, and Before takeoff sections, using the same procedure as above.

Follow the Cockpit Setup checklist below to get powered on and ready to get started with your flight. (Note that some items may already be in the following states.)

## POWER Checklist

Overhead Electrical: Battery	On
Overhead Electrical: Standby Power Selector	Auto
Overhead Hydraulic: Demand Switches	Off
Overhead Electrical: EXT PWR 1 & 2	On if available

## PREFLIGHT Checklist (Abbreviated)

Overhead: IRS Selectors	NAV
Overhead: Emergency Lights Switch	Guard closed
Overhead: Wiper Selectors	Off
Overhead: Yaw Damper Switches	On
Overhead Lights: Nav Lights	On
Overhead Lights: Logo Lights	On
Panel Lights	As Required
Pedestal: Parking Brake	Set

You should now have power to all screens and are ready to begin setting up the CDU for this flight.

## CDU Setup

*CDU setup on the 747-400 (including the Dreamlifter and Supertanker) and the 747-8 (-8i and -8f) is similar. Therefore, this tutorial uses the screenshots captured on the 747-8i. On the Dreamlifter and Supertanker the CDU uses an older black-green CRT display.*

You are looking at the IDENT page. To get started, press the line select key (LSK) next to POS INIT>

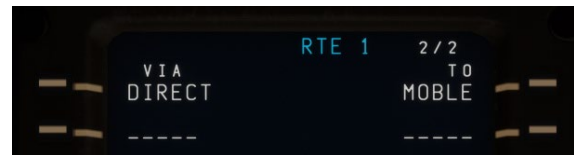
POS INIT page: the GPS POS should already be populated, since the aircraft has already acquired a GPS position; you may confirm the coordinates with the airport chart if you like. Press the LSK next to ROUTE> to proceed.

RTE 1 page 1: Enter origin and destination airport IDENTs on page 1. Your ORIGIN is KORD and your DEST is KIAD. If your flight number is not already populated, you can enter it now (e.g. BOE1).

RTE 1 page 2: Press the NEXT PAGE button to begin entering your route. The left column contains airways, and the right column contains waypoints.

Remember your route is: MOBLE ADIME ASHEN J60 DJB J162 MGW

Type MOBLE into the scratchpad with the keyboard, then click on the top right LSK. The page should now look like this:



Repeat the above with ADIME and ASHEN, placing the waypoints in subsequent rows below MOBLE.

Now we will enter our two airways. You should have three rows filled and an empty fourth row – enter J60 into the scratchpad and press the **left** LSK on the fourth row.

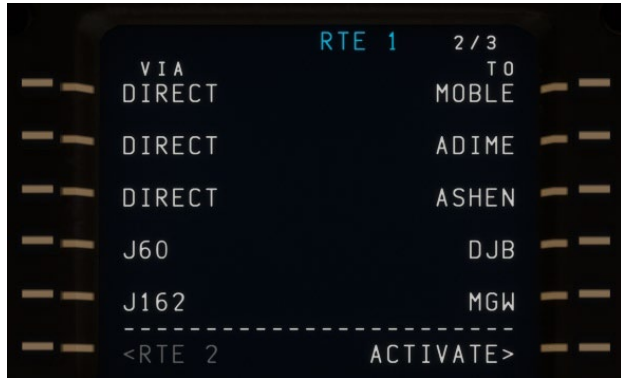
It should look like this:



After entering an airway, you can either enter the exit waypoint in the right (TO) column, or you can enter another airway below that connects with the prior airway. In your case, since our flight plan calls for changing from airway J60 to J162 at DJB, we can simply enter airway J162 on the next line and the FMS will automatically determine that we want to change airways where the two intersect at DJB.

Enter J162 into the scratchpad and then press the **left** LSK on the fifth row; the FMS should automatically fill DJB on the right column of the fourth row, indicating that we will fly airway J60 from ASHEN to DJB and then join airway J162.

Lastly, we want to enter our airway exit from J162, which is the final enroute leg of our flight plan. Enter MGW into the scratchpad and then press the **right** LSK on the fifth row – the page should now look like this:



Now that our enroute plan is entered, you can go enter your departure and arrival details, since we already know what they will be. Press the DEP ARR button on the CDU to go to the DEPARTURES page.

DEPARTURES page: We are departing from runway 27L today; use the NEXT PAGE button to page through the RUNWAYS until you see 27L and then press the LSK next to 27L. We will not be using a SID today, so you should see a <SEL> indication next to runway 27L, indicating that we have selected 27L for our departure. Now click the LSK next to <INDEX> to go back to the DEP/ARR INDEX page.

ARRIVALS page: From the DEP/ARR INDEX page, click the LSK next to ARR> to enter the ARRIVALS page. On the ARRIVALS page, we can select our STAR (arrival procedure) and our approach as well. You should see your planned arrival procedure GIBBZ5, on the first page (use NEXT PAGE to page through all options). Click the LSK next to GIBBZ5; this will show GIBBZ5 as selected and prompt you to choose a transition (TRANS); since we are joining the arrival at MGW, press the LSK next to MGW. You will now see the STAR and TRANS are both indicated as selected with <SEL> shown to the right of each entry.

Now you can select the approach – you are planning ILS 01R, so select that with the adjacent LSK. You will be prompted to choose a transition; in this case, because the GIBBZ5 arrival is a vectors arrival, we will not choose an approach transition. The page should look like this, showing GIBBZ5 via MGW selected, and showing ILS 01R without a transition selected as well:



Now, we can go inspect our flight plan using the LEGS page and the PLAN view on the Navigation Display (ND). Press the LEGS button on the CDU to navigate to the LEGS page.

LEGS page: You can review your legs page and flight plan to ensure your plan is as you expect and clear any discontinuities. Use the NEXT PAGE/PREV PAGE buttons to navigate through the pages of the plan. The LEGS page displays each leg of the plan.

On the ND control panel on the glareshield left side, rotate the map format knob to the PLN position to select the PLAN map mode. Adjust map range as desired and use the LSK next to STEP> on the CDU to step through your flight plan on the map. Since we have not yet activated the plan, legs will be shown as dashed lines. Make sure each leg is as you expect it. If you find a discontinuity, for example between AIR and MGW, you can simply press the DEL key on the CDU keyboard and then click the left LSK next to the discontinuity to remove it; you should then see AIR and MGW connect with a dashed blue line on the ND.

Once you are finished inspecting legs, you can return to the RTE page by clicking the RTE key on the CDU.

RTE 1 page: Back on the RTE 1 page, you are ready to ACTIVATE> your flight plan – press the LSK next to ACTIVATE>. The EXEC button on the CDU should now be lit up, indicating the route has been modified and is ready for execution. Press EXEC. You will notice the top of the RTE page now shows header ACT RTE 1, indicating that RTE 1 is now the active route in the flight computer. You will also notice the flight path turns magenta on the ND, since this is now the route that the flight director and autopilot will follow if/when engaged.

Next press the LSK next to ALTN> to enter your alternate airport KPHL.

ALTN page: Enter KPHL into the scratchpad and then press the left LSK on the first row to add KPHL as the first alternate. You can enter additional alternate airports if desired. Press the RTE button on the CDU to return to the ACT RTE 1 page. Now press the LSK next to PERF INIT> to begin entering performance data for the flight.

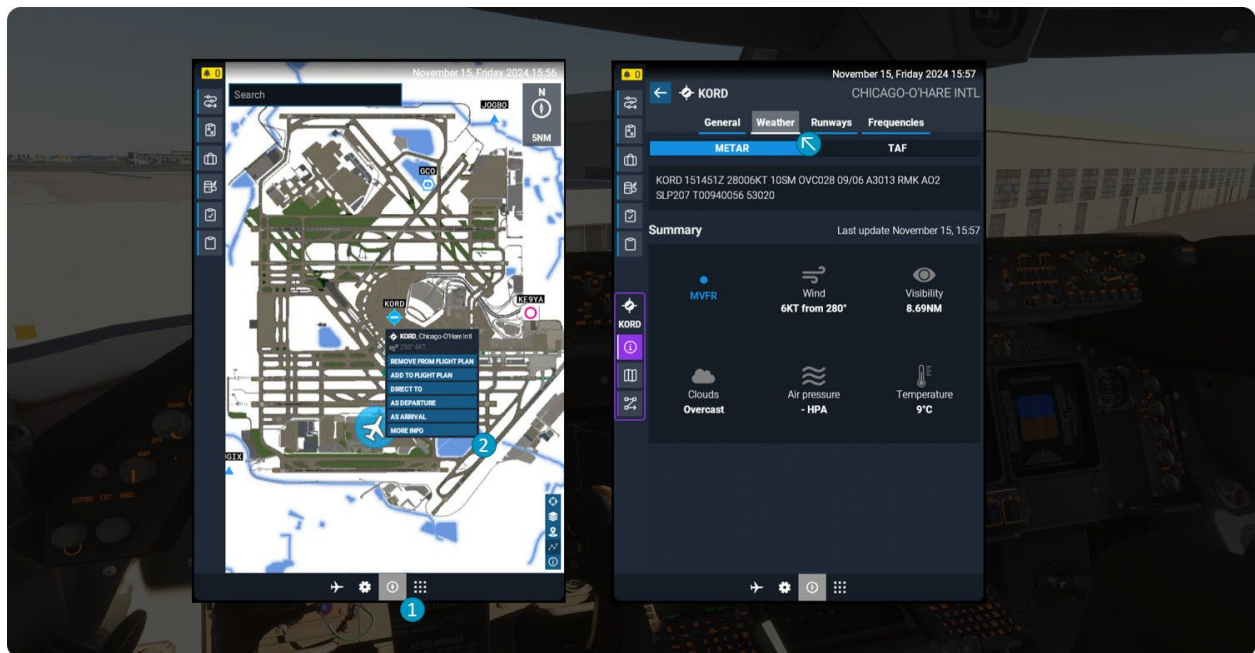
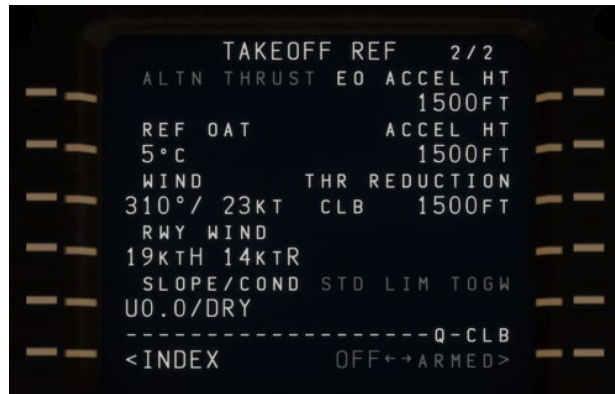
PERF INIT page: You will see GR WT (gross weight) empty and FUEL shows the sensed fuel value. You may enter your ZFW (zero fuel weight) manually, or you can simply click on the LSK next to ZFW to populate the current ZFW automatically into the scratchpad – press the LSK next to ZFW a second time to enter the value. The CDU will now calculate the gross weight value and that will be displayed in the GR WT field. Enter your final reserves, which for this flight is 13,762 lbs – all weights are entered in thousands of pounds, so enter 13.8 into the scratchpad and press the LSK next to RESERVES.

Next, enter your cruise altitude, 37000, into the scratchpad. Press the LSK next to the CRZ ALT field. This change will prompt you to EXEC the change; go ahead and accept the change by pressing EXEC. Now enter 50 into the scratchpad and press the LSK next to the COST INDEX field to load a cost index of 50 into the FMS. Press the LSK next to THRUST LIM> to navigate to the THRUST LIM page to setup takeoff and climb thrust values.

THRUST LIM page: This page allows you to set a derated thrust for takeoff and climb, either via a selected fixed derate value or with a selected temperature derate. For this flight, we will use full thrust for takeoff and climb, so we will leave the values as they are, with TO showing <SEL> and CLB showing <ARM>. Navigate to the TAKEOFF page by pressing the LSK next to TAKEOFF>.

TAKEOFF page: The Takeoff page requires entries on both the first and second page before calculated v-speeds will be available. It is best to start on page 2, so press the NEXT PAGE button to get to page 2. Enter the current wind from ATIS or METAR into the scratchpad in the format HDG/SPD, so if winds are reported from 285 degrees at 12 knots, you would enter 285/12; if winds are reported as 40 degrees at 6 knots, you would enter 40/6. In this example, winds are from 310 degrees at 23 knots, gusting to 31 knots. We will enter 310/23 into the scratchpad and then press the LSK next to the WIND field. To access the METAR search for your airport in the flight planner in the EFB, then you can access the METAR from the airport details.





After entering the winds, enter the outside air temperature (OAT) into the scratchpad; in the example above, the OAT is 5C, so enter 5 into the scratchpad and then press the LSK next to REF OAT field. Once winds and OAT are filled, press the PREV PAGE button to return to page 1 of the TAKEOFF page.

For this takeoff, you will use flaps 10, so enter 10 into the scratchpad and then press the LSK next to the FLAPS field. Skip past the THRUST field and press the LSK next to CG to load the takeoff CG into the scratchpad, then press the LSK next to CG a second time to load the value – once entered a takeoff trim value will be displayed which you can use to set takeoff trim later.

Next, for each of the takeoff V speeds (V1, VR, V2) press the LSK next to the speed field to load the adjacent value in the REF column directly into the V speed field.

**VERY IMPORTANT:** You need to put the V2 speed in the MCP speed window (the selected speed on the autopilot panel). In this example, our V2 speed is 161 knots; you need to look up at the glareshield and enter 161 into the speed window.



Now that you have set up your route, performance data and takeoff data, the last step is to set up VNAV for your flight. On this flight, we will use the ECON speeds calculated from the cost index you entered on PERF INIT. Press the VNAV button on the CDU to open the VNAV CLB page.

CLB page: Confirm the CRZ ALT field shows your entered cruise altitude and review the calculated ECON SPD for the climb. Press the NEXT PAGE button to navigate to the VNAV Cruise page.

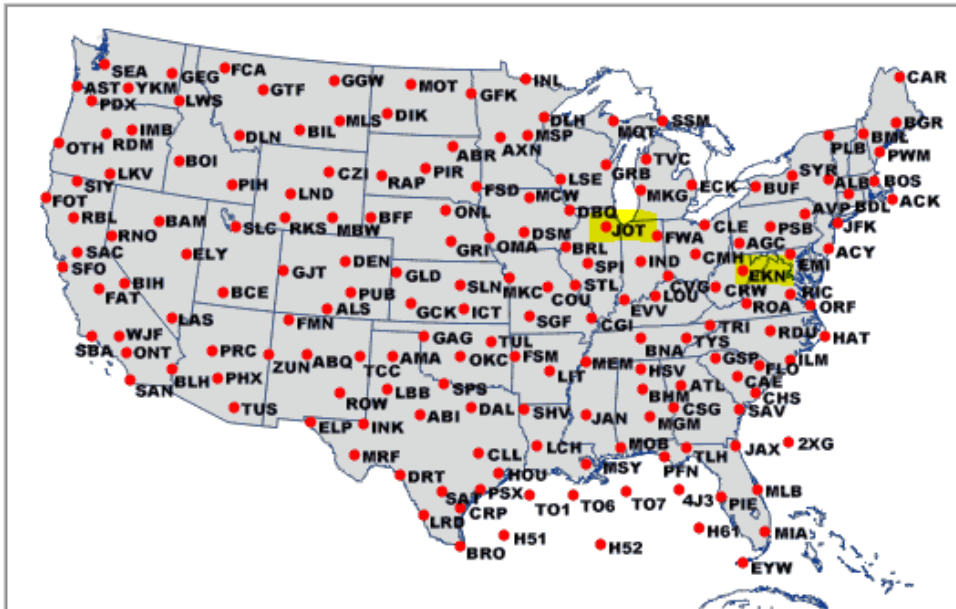
CRZ page: On this page you can see and confirm your cruise altitude and you can see the predicted ECON cruise speed, as well as the distance to top of descent (T/D), the current predicted fuel and arrival time at your destination, as well as the calculated optimal and max altitude based on predicted speeds and weights. Press the NEXT PAGE button to navigate to the VNAV Descent page.

DES page: As with the other VNAV pages, you can review data related to your descent here, including where the end of descent (E/D) is, what the next descent constraint is and what the predicted ECON speed for descent will be. We need to give VNAV some winds aloft data to help the FMC provide an acute descent profile. Press the LSK next to FORECAST> to enter the descent forecast page.

DESCENT FORECAST page: This page is where you can give the FMC multiple wind references. These are entered as rows of ALTITUDE in the left column and WIND DIR/SPD in the right column. It is recommended to provide at least three values; finding values for this page will depend on whether you are flying with live weather or a preset. In this example, we are using live weather, so you need to find several references for winds aloft at your arrival route. If you used Simbrief to create your flight plan, you can get these values from the FLIGHT LOG. Windy.com also has this data available via their interactive map. Today, we will use the FAA's aviation weather website to collect winds aloft data. In a web browser, go to <https://aviationweather.gov/>.

On that page look at the Winds/Temps Data map – in our case the closest station to our arrival route is EKN.

## Winds/Temps Data



First click on EKN and you will see a text list of wind data – find EKN in the first column.

Winds/Temps Data										
Level:		<input checked="" type="radio"/> Low	<input type="radio"/> High	14Z-21Z	Northeast (Boston)		Print			
(Extracted from FBUS31 KWNO 201400)										
FD1US1										
DATA BASED ON 201200Z										
VALID 201800Z FOR USE 1400-2100Z. TEMPS NEG ABV 24000										
FT	3000	6000	9000	12000	18000	24000	30000	34000	39000	
BDL	1705	3010+09	3113+03	3320-02	3321-12	3133-23	285237	276247	276358	
BGR	9900	0110+05	3414+00	3114-04	0110-16	0415-29	064143	052548	321748	
CAR	3605	0709+04	0209+01	0112-03	0319-15	0324-28	012943	013050	012052	
PWM	3008	3408+07	2910+01	2911-04	3519-17	3525-29	313740	304544	313550	
EMI	1016	1115+10	1113+06	1311+02	0812-10	2206-20	241936	242446	244757	
ACK	0806	3509+09	3414+02	3218-01	2935-12	2943-24	277236	277747	277958	
BOS	9900	3010+08	3216+02	3220-03	3237-14	3052-24	287138	288347	287557	
BML	9900	0307+06	0208+01	3506-03	0223-15	0229-27	033941	363649	332851	
ACY	1016	1111+11	1307+05	9900+02	3007-11	2517-20	243235	253446	254757	
ALB	9900	3407+10	3213+03	3215-01	3419-12	3230-23	294239	285848	285458	
BUF	0815	9900+12	9900+05	9900+00	0510-11	3606-24	282240	263748	273458	
JFK	1210	9900+10	9900+04	3212+00	3308-11	3016-22	263736	264547	265558	
PLB	0406	0211+08	0113+02	3617-02	0123-13	3527-25	343340	343049	332656	
SYR	0807	9900+11	3506+05	3209+00	3624-12	3420-24	292840	274448	274058	
CLE	1415	1320+12	1224+06	1123+01	0818-09	0416-21	990037	221048	241659	
CMH	1119	1323+12	1121+07	1020+02	0913-09	0509-20	181336	192448	201559	
CVG	0921	0923+13	0920+08	0814+03	0613-09	0716-21	111736	131648	121058	
AGC	1215	1226+12	1119+06	1117+00	0812-10	9900-21	241736	252247	252658	
AVP	1407	9900+11	9900+04	3607+01	0213-11	3508-23	263336	264048	264558	
PSB		1210+12	1012+05	9900+01	0921-11	9900-22	252237	263147	253858	
ORF	1015	1115+12	1411+08	1510+02	2215-08	2019-19	233234	243544	254756	
RIC	0921	1017+11	1211+08	1613+01	2206-09	2314-19	222334	243644	245257	
ROA	0926	1229+11	1521+07	1616+02	1910-09	1915-21	181835	203645	226158	
CRW	1224	1528+13	1519+08	1314+02	1214-10	1513-20	151336	151647	202557	
EKN		1332+12	1416+07	1314+01	1110-10	1509-20	181736	201947	224157	



Today you will enter data for 9000', 24000' and 39000'

- In the 9000' column, you see 1416+07.
- The first two digits 14 represent the heading – in this case we need to add a 0 to the end to get 140.
- The second two digits 16 represent the speed – in this case 16 knots.
- The last digits +07 are the temperature, in degrees Celsius – in this case +07 degrees C.
  
- In the 24000' column, you see 1509-20.
- The first two digits 15 represent the heading – in this case we need to add a 0 to the end to get 150.
- The second two digits 09 represent the speed – in this case 9 knots.
- The last digits -20 are the temperature, in degrees Celsius – in this case -20 degrees C.
  
- In the 39000' column, you see 224157.
- The first two digits 22 represent the heading – in this case we need to add a 0 to the end to get 220.
- The second two digits 41 represent the speed – in this case 41 knots.
- The last digits 57 are the temperature, in degrees Celsius – in this case -57 degrees C; temperatures above 24000' are automatically negated, so any temp reported above 24000' will always be negative.

There are many special cases for this hard-to-read report – this website is a good reference for decoding winds aloft:

<https://www.cfnotebook.net/notebook/weather-and-atmosphere/winds-and-temperatures-aloft>

To enter the values decoded above, you first enter the altitude in the scratchpad – so for the example above, enter 9000 in the scratchpad and then press the LSK next to the first empty ALT line. Next, we will enter the corresponding wind data in format DIR/SPD, so for the 9000' example above, enter 140/16 in the scratchpad and then press the LSK next to the WIND DIR/SPD entry for the 9000' entry we just made. It should look like this:



Repeat the above for the two additional data points at 24000' and 39000'. It should look like this:



Once this is complete, you can press the RTE button on the CDU and you are finished setting up the CDU for your flight.

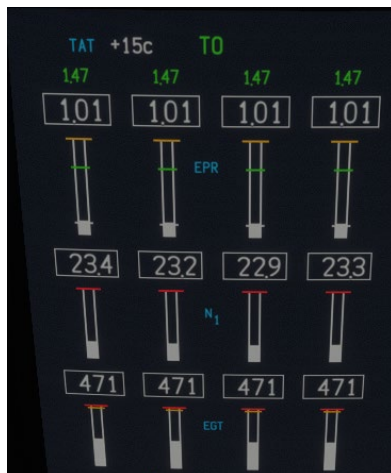
## Pushback and Engine Start

After setting up the CDU, you are ready to push back and start up. First, you need to call for the air start cart service in the CDU settings page. To get there, click the *init/ref* button on the CDU, click the *line select* key next to *Index*, then the *line select* key next to *Settings*, and finally select *Request Ground Air*.

### Pushback & Engine Start – Abbreviated Checklist

Pedestal: Seat Belts	On
Overhead Electrical: EXT PWR 1/2	Off
Overhead: Anti-ice Switches	Auto
Overhead: Window Heat Switches	On
Overhead Lights: BEACON	Both
Overhead: Packs Switches	Off
Overhead Hydraulics: Hydraulic Demand Pumps	Auto
Pedestal: Parking Brake	Off
Pushback	As required
Pedestal: Fuel Control 4	Run
Overhead Engine: Start 4	Start
Engines 1, 2 & 3	Repeat Procedure
EICAS: Monitor N2	Running

Watch the engine gauges on the EICAS MFD to make sure that your engines are spooling up properly. They should look like this when finally at idle.



### FUEL TANK/ENG:

On the EICAS display you may see an amber message “FUEL TANK/ENG”. Because we don’t have fuel in our center, or reserve tanks, and all the main tanks have the same amount of fuel in them, this means we are in the Tank To Engine state (“FUEL TANK/ENG”). This means we should make sure that the OVRD 2 and 3 fuel pump switches are turned off, and the FUEL X FEED 1 and 4 switches are turned off. This should clear the message.

## After Start/Pushback – Abbreviated Checklist

Pedestal: Parking Brake	On
Overhead: Packs Switches	On
Pedestal: Transponder Mode	TA ONLY
Pedestal: Flaps	Set
Pedestal: Trim	Set
Glareshield MCP: Altitude	Set for initial climb
Glareshield MCP: Heading	Set for runway heading
Glareshield MCP: Flight Director	On
Glareshield MCP: Baro Knob to local pressure	Set
Taxi Route	Verify

As part of the above checklist, set your flaps to your takeoff flaps position of 10, and set your takeoff trim using the standard trim key binds to the value indicated on the TAKEOFF CDU page. Taxi to and hold short of the departure runway per ATC instructions.

## Takeoff

Now that you have taxied to the runway, you are ready to prepare for takeoff. For this flight, because there is not a departure procedure, you will follow ATC instructions. For the purpose of this flight, you will assume an assigned initial altitude of 5000' and an assigned heading of runway heading (273). This means you will want to arm VNAV per the checklist below, but you will not arm LNAV because our departure will be in heading mode. Make sure you have set the MCP heading window to the runway heading of 273 (runway heading for RW27L), and the MCP altitude window to 5000.

Your MCP should look like this for takeoff:



VNAV will command a climb to 5000' and TOGA lateral mode will keep you level until you engage heading mode.

### Before Takeoff – Abbreviated Checklist

Flight Controls	Check
V Speeds	Confirm on PFD
Glareshield MCP: Speed Window	Confirm V2 Speed Set
Glareshield MCP: Altitude Window	Confirm Set
Pedestal: Transponder Mode	TA/RA
Pedestal: Speed Brake	DN
Autobrake	RTO Set
Flaps	Confirm Set
Trim	Confirm Set
Overhead Lights: Landing Lights	On
Overhead Lights: Strobe Lights	On
Line Up: Confirm on assigned runway	Confirm
Glareshield MCP: LNAV	Arm as required
Glareshield MCP: VNAV	Arm as required
PFD: FMA Confirm TOGA - TOGA	Confirm
Glareshield MCP: A/T ARM	Armed (on)
Pilot/Copilot MFDs	Configure as desired

Once you have completed the above before takeoff checklist items, taxi on to the runway and line up for takeoff.



Now you are ready to begin your takeoff. Confirm your PFD FMA shows TO/GA - TO/GA for roll and pitch modes and that your auto-throttle arm switches are on. To engage the auto-throttle to set takeoff power, you will need to press the TOGA button once (or use a control binding for AUTO THROTTLE TO GA). If using the click spot on the throttles, first highlight the throttles and then right click to view the button clicking options for the throttles with tooltips on.



Once you press the TOGA button, the auto-throttle will smoothly move your throttles to takeoff power and you will begin accelerating for takeoff. Rotate at the Vr speed indicated on the PFD and follow the flight director guidance for takeoff. After you have passed 50' AGL, you can engage the autopilot.

**NOTE ABOUT TAKEOFF THRUST:** The EEC will calculate takeoff thrust, which will be indicated on the EPR gauge by the green line and the % value will be indicated in green above gauges. When TOGA is pressed the auto-throttle will take command of the levers and command takeoff thrust; the FMA will indicate THR REF mode. At 80kts the mode will change to HOLD – this disables the auto-throttle servos and leaves the throttles in manual control. Some hardware throttles create noise and the thrust can be inadvertently changed to the current hardware throttle lever position if not careful. To avoid this, it is important to have the throttles set manually to the green line on the N1 gauge before pressing TOGA. Once at thrust reduction height (by default, 1,500’ AGL), the auto-throttle mode will change back to THR REF and climb power will be set.

**Takeoff – Abbreviated Checklist**

Pedestal: Parking Brake	Off
Throttles: Increase to 30% N1 and verify indications	Verify
Throttles: Increase to target N1 (Green Line)	Set
Throttles: TOGA (press before 50 kts)	On
PFD: FMA Confirm A/T mode THR REF	Check
PFD: FMA Confirm A/T mode HOLD at 80 kts	Check

## Climb

Now that you are airborne, climbing to your initial altitude of 5,000' confirm you have raised your landing gear and retract flaps per the schedule on the PFD speed tape. Confirm that the auto brake is reset to OFF.

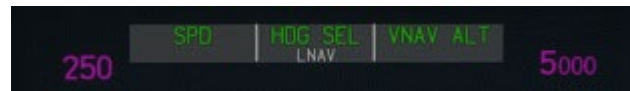
### After Takeoff – Abbreviated Checklist

Landing Gear	Up
Flaps	Retract per schedule
Auto Brake	Off
Overhead: Lights	As required

After passing 1,500' AGL the EICAS should show CLB thrust, and the auto-throttle will adjust throttle position and power to set climb thrust. You will see on the PFD FMA that the auto-throttle mode changes back to THR REF indicating that the auto-throttle servos are maintaining climb thrust. You will also note that VNAV SPD is the active pitch mode now and that the MCP speed window is closed (blank) meaning that the FMS and VNAV are controlling the target airspeed, which is indicated on the PFD in magenta above the speed tape. You can also now press the SEL button on the MCP heading knob to activate HDG SEL roll mode to maintain the assigned runway heading.

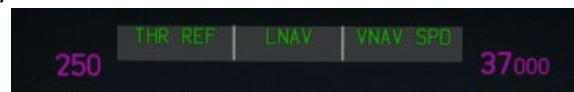
As you approach your initial altitude of 5,000', you will see the FMA pitch mode change to VNAV ALT, indicating that you are capturing (or have captured) the MCP altitude. The auto-throttle mode will change to SPD mode to maintain the VNAV target speed.

Now you are ready to proceed on your route to KIAD. Air traffic control has cleared you direct to MOBLE and instructed you to climb to your cruise altitude of 37,000'. To accomplish this, first arm LNAV by pressing the LNAV button on the MCP – you will see LNAV in white letters below HDG SEL indicating that LNAV is armed.



On the CDU, press the LEGS button to display the LEGS page. On the LEGS page you should see the first row shows MOBLE in magenta – this is the active leg, however because we are not currently on the flight path, we need to tell the FMS to draw a new path from our present position to MOBLE – to do this, press the left LSK next to MOBLE – you will see the text MOBLE appear in the scratchpad – now press the same left LSK button again – this will create a direct to MOBLE – and you will be prompted to press EXEC. Press EXEC. You will now see the active roll mode change to LNAV on the PFD FMA and the plane will begin a turn towards MOBLE – you are now following the FMS flight plan.

Now that you have begun to navigate to MOBLE, it is time to start your climb. Set 37000 in the MCP altitude window. Once that is set, you can command the plane to start a VNAV climb to that altitude by pressing in once on the altitude knob. The plane will begin a climb, you will see the PFD FMA now reflects VNAV SPD as the pitch mode and THR REF as the auto-throttle mode.





The plane will climb to cruise altitude and proceed on your flight plan course. As you pass through 18,000' (the climb transition altitude), you will see the barometric pressure setting on the PFD turns amber, prompting you to press the STD button on the BAROSET knob on the glareshield – this will set your altimeter to standard pressure.



## Cruise

Now that you have climbed to your cruise altitude, you can check your flight progress with the ND, the VNAV CRZ page and the PROG page. The PROG page will show you the distance to go, the ETA and estimated fuel on board. The VNAV CRZ page will show the distance to top of descent and the expected arrival time at that point. The top of descent is also indicated on the ND with a T/D marker in green. The T/D point is calculated by the FMS based on winds, weight and the descent flight path so can move as conditions change.



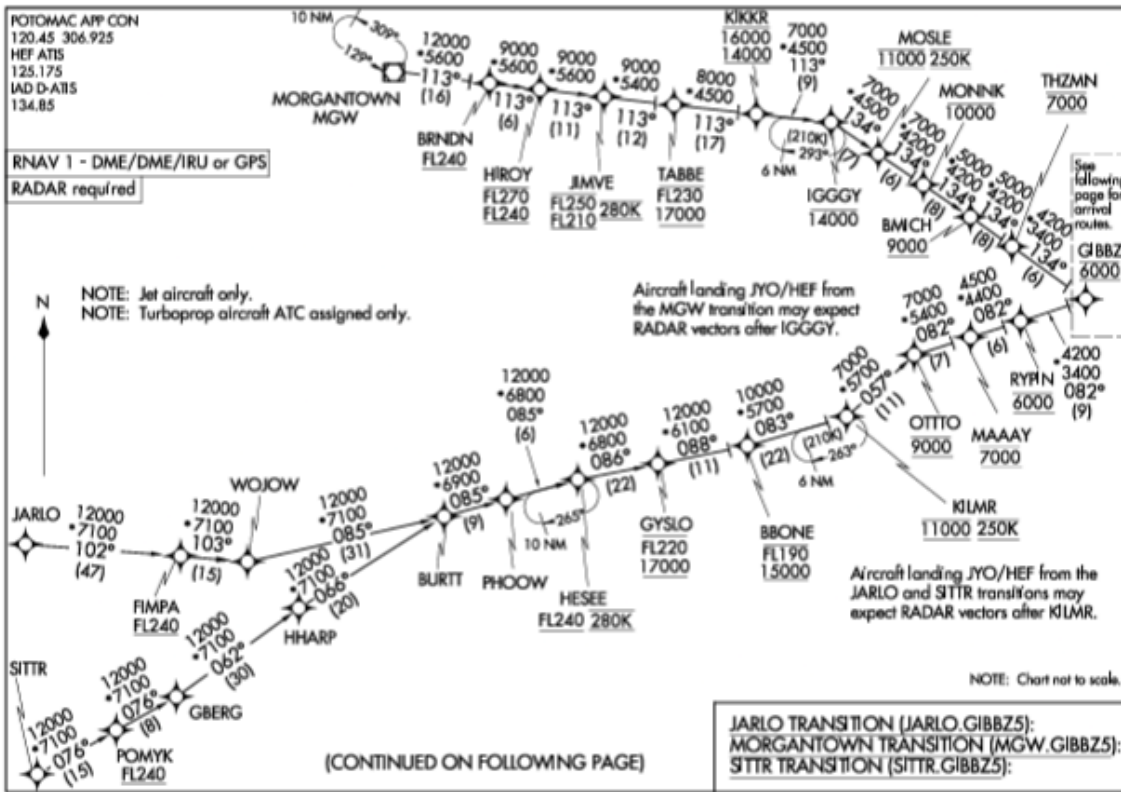
### **Cruise – Abbreviated Checklist**

Glareshield: Baroset	Std
Pedestal: Seat Belts	Off/As required
Overhead: Lights	Off/As required

During cruise is a good time to review your arrival and approach procedures. For the approach, you will be flying the GIBBZ5 arrival and the ILS 01R approach. Charts can be accessed for free in the United States from a number of sources – you can see all the charts on the AirNav website here <https://airnav.com/airport/KIAD>.

The GIBBZ5 arrival chart has two pages – on the first page (below) you can see the route you will follow starting at MGW, which is the arrival transition you selected in the FMC. You will set your MCP altitude to the lowest altitude of 7,000' at THZMN. The FMS will meet all altitude constraints on the arrival and will do it's best to meet the speed restrictions as well; you may need to apply speed brakes at some points during the arrival to slow down for speed constraints.

GIBBZ FIVE ARRIVAL (RNAV) Transition Routes  
 (GIBBZ.GIBBZ5) 21MAR24



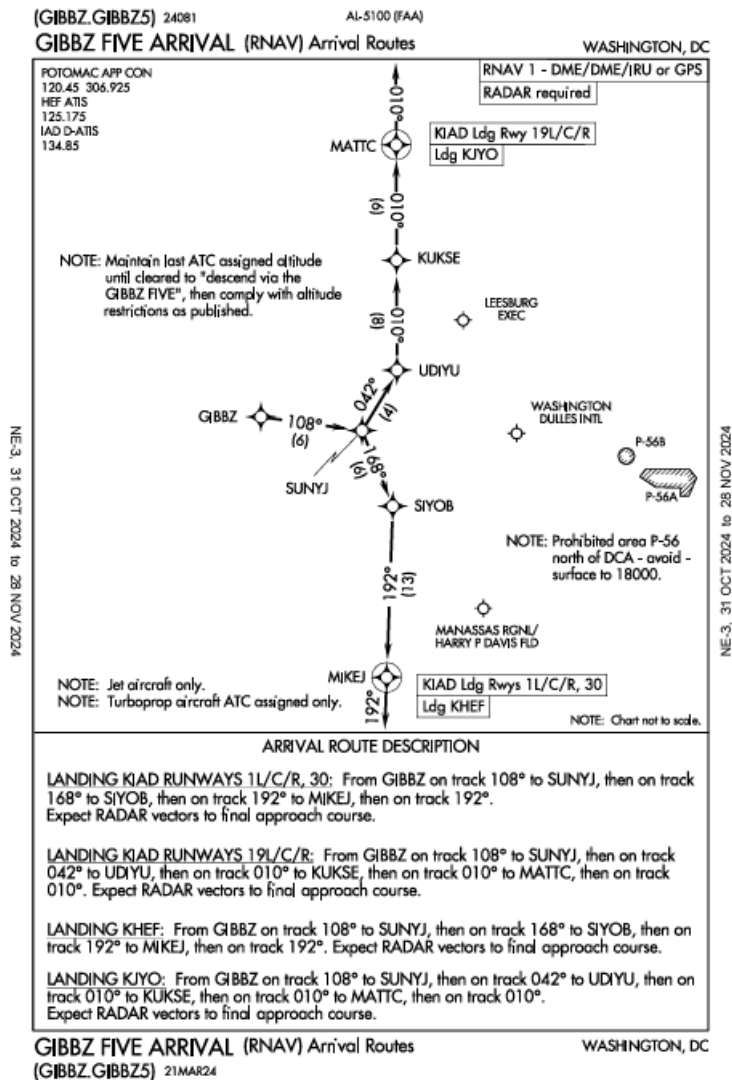
(GIBBZ.GIBBZ5) 24081  
 GIBBZ FIVE ARRIVAL (RNAV) Transition Routes  
 AL-5100 (PAA)

WASHINGTON, DC

NE-3, 31 OCT 2024 to 28 NOV 2024

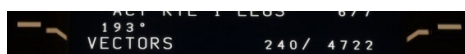
NE-3, 31 OCT 2024 to 28 NOV 2024

(CONTINUED ON FOLLOWING PAGE)



After GIBBZ you need to look at the second page of the arrival, where you see specific instructions for your landing runway (1R). For landing runway 1R, you will follow the route to the south after GIBBZ. The FMS has already loaded these legs because you selected ILS 1R as the approach. You can confirm that these legs are included in the LEGS page on the CDU.

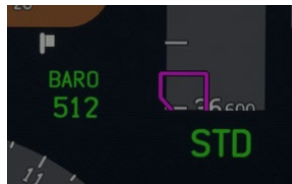
Like many arrival procedures, this arrival ends with a vectors leg – this means that the procedure ends at MIKEJ and you are supposed to continue flying south, on a heading of 193, until you receive instructions from ATC to turn and intercept the approach course. This is depicted in the CDU like this:



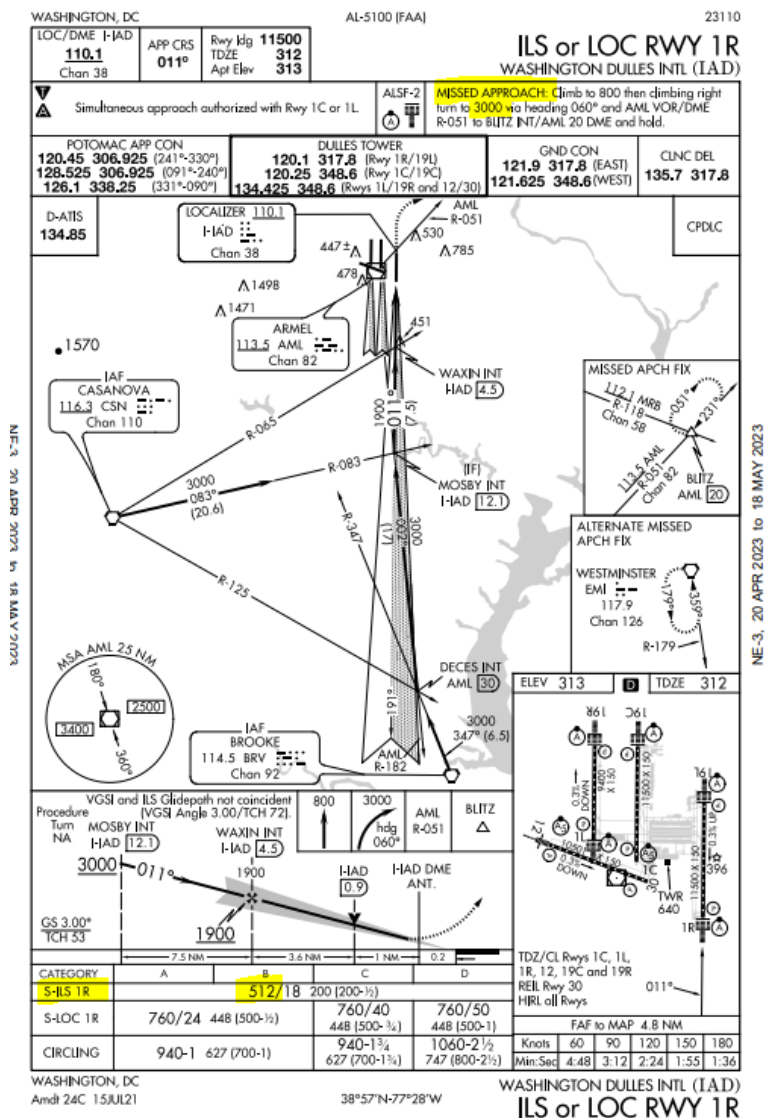
The FMS will command the plane to continue flying that heading until you tell it what to do next. Once you reach this vectors leg, we will lower our MCP altitude to the final approach altitude and use another direct to function to turn towards the approach.

The ILS 01R approach chart contains a few pieces of information you need to configure the aircraft for the approach. The first item are the minimums, which you will set on the PFD. The minimums are listed on the bottom of the approach chart. You will be flying a straight-in ILS approach, so look for the row marked S-ILS 1R. The barometric minimum altitude is the first number (512) so the minimums for this approach are 512' above sea level. This corresponds to 200' above the touch down zone elevation.

Enter the minimums on the PFD now – above the PFD and next to the BAROSET knob is a knob marked MINS. The outer knob selects whether you want to set BARO or RA mins, and in this case you want BARO mins – confirm the outer knob is set to BARO. Next use the inner knob to adjust the minimums value. As you turn the knob, this will be displayed near the bottom/right of the PFD in green text.



The second item you need to note on the approach chart is the missed approach altitude. At the top of the chart, there is text describing the missed approach procedure, and this contains an altitude to climb to. You will use that value later on to set your missed approach altitude once established on the ILS approach so that the autopilot is primed to climb to that altitude if you have to go around.



## Descent

As you approach the top of descent (T/D) point, it is time to prepare for descent. To descend via the FMS calculated VNAV profile, you will need to reset the MCP altitude window to a lower altitude. For this tutorial flight, we will set the MCP altitude to 7,000', which is the lowest altitude constraint on the arrival procedure. You can do this at any time during cruise, but we recommend doing so about 10NM before the T/D. Check the VNAV CRZ page and once the distance TO T/D is 10nm, set the MCP altitude window to 7000. In addition, set your seat belt sign to on for descent, and set your AUTOBRAKE knob to 3.

Next you need to set your approach ref speeds in the CDU. On the CDU, press the INIT REF button, then the INDEX LSK to open the Approach Ref page.

APPROACH REF page: On this page you can choose an approach flaps setting and corresponding VREF speed. The options will be Flaps 20, Flaps 25 and Flaps 30. You will use Flaps 30 for this landing, so press the right LSK next to the Flaps 30 row, which will copy the flap and VREF speed to the scratchpad, then press the right LSK next to the FLAP/SPEED field to insert those values. This will set the proper VREF speed on the PFD.

### **DESCENT Checklist**

Pedestal: Seat Belts	On
Glareshield MCP: Altitude	Set lower as required
Cancel/Recall Switch	Push
Autobrake	Set as required (3)
Glareshield: Baro set at transition altitude	Local pressure (as req'd)
Glareshield: Approach Mins	Set as required
CDU: Approach Ref	Set as required

Upon reaching T/D, the plane will begin to decelerate, if required, to reach the descent speed schedule on the CDU VNAV DESCENT page. When this happens, if required, the T/D marker will move slightly ahead to show when the deceleration will finish and where the descent will actually begin. Upon reaching the second T/D, the aircraft will begin a descent along the computed descent path. The target speed will adjust as required to attempt to comply with descent speed constraints.

The initial descent segment is done at/near idle thrust. The FMS calculates an initial descent segment based on the input winds and aircraft weight to allow a descent near idle from the T/D to the first altitude constraint. Upon reaching the first altitude constraint of the arrival, the FMS then follows a computed geometric path through the remaining constraints to the end of the descent (E/D).

As you descend through 18,000' the STD baro indication on the PFD will turn amber; this is your prompt to set the local barometric pressure, which you can do by pressing the STD button on the baro knob to change modes back to a selected pressure and then set the current local pressure. You can also use the 'B' key to accomplish this and automatically set the local barometric pressure.

Continue the descent until 7,000' at THZMN.

## Approach

As you descend through 10,000' switch your landing lights on, confirm the seat belt signs are on and confirm that the FMS has commanded a speed lower than 240kts – use speed brakes to decelerate if required.

Once the autopilot has leveled the plane off at 7,000' upon reaching the THZMN leg, we are ready to prepare for the approach and landing. For this approach, you will be simulating some typical ATC instructions that would be reasonable in a real-life approach.



Upon reaching SIYOB descend to 5000' and reduce speed to 220 kts. To do this, first press the speed knob to display/open the speed window, then use the knob to reduce speed to 220. Opening the speed window allows you to take manual control of the target airspeed. The PFD will reflect the newly set speed in magenta.

Next, select flaps 5; since the max speed for flaps 5 is 240 kts, we can safely lower flaps to the 5 position now that we are slowing from 240 to 220.

Next, lower the MCP altitude to 5000'. For this part of the descent, you will use VS mode. Press the VS/FPA button to engage VS mode, and use the VS select knob to select -800 to establish a descent at 800 feet per minute.

The plane will now descend to 5000' at 220 kts. Continue in LNAV to MIKEJ.



You can now arm the SPEED BRAKES by moving the handle on the pedestal to the ARMED position. The armed position is similar to the DN position, but with the lever pulled out. The lever is very sensitive, so might take some careful movements to get it into position. EICAS will display a SPEEDBRAKES ARMED if it is in the correct position.

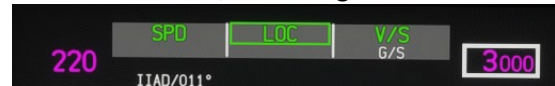
Upon reaching MIKEJ, the plane will continue on the vectors heading of 193 in LNAV mode. Once you are past MIKEJ and level at 5000', open the LEGS page by pressing the LEGS button on the CDU.



To simplify intercepting the approach, press the left LSK next to ESTYN – you will see ESTYN appear in the scratchpad. Press the left LSK next to VECTORS on the top line to initiate a direct to ESTYN to intercept the approach. You will be prompted to press EXEC – do so now.

Now the plane will begin a left turn to intercept the final approach. Begin a descent to 3,000' by setting the altitude in the MCP altitude window to 3000 and once again selecting VS mode with a -800 descent rate.

As you approach ESTYN, about 1NM prior to reaching ESTYN, press the APP button on the MCP panel to arm approach mode. The PFD FMA should show LOC as the active roll mode, indicating that the localizer has been captured, and should show G/S in white as the armed pitch mode.



After ESTYN, reduce speed to 180 knots by using the MCP Speed knob to lower the target speed to 180. Set flaps 20 after completing this step.

Prior to reaching WAXIN, you will intercept the glideslope for the approach and you will see the active pitch mode change to G/S on the PFD FMA.



Now that the glideslope has been captured, you can set your MCP altitude to the missed approach altitude identified earlier when reviewing the approach. In this case, the missed approach altitude is 3,000'. Since that was the last altitude you selected for descent, you do not need to change it – confirm 3000 is dialed into the MCP Altitude window.

As you approach WAXIN, lower the speed target using the MCP Speed knob to VREF + 5. The VREF speed is calculated on the APPROACH REF page and indicated on the PFD in the speed window. Lower the landing gear and set flaps to 30 for landing.

### Final Approach – Abbreviated Checklist

Overhead Lights: Landing Lights	On
Glareshield MCP: Altitude	Set for missed approach
Glareshield: Minimums	Set as required
Autobrake	Set as required (3)
Landing Gear	Down
Flaps	Set for landing
Pedestal: Speed Brake	Armed

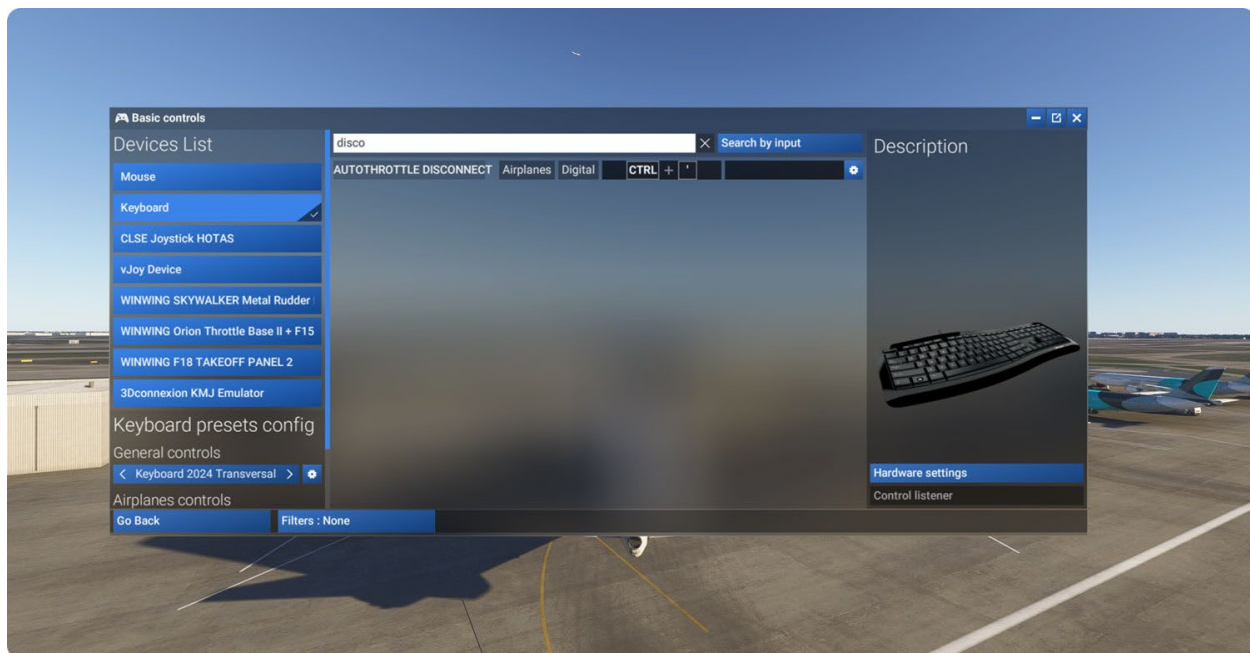


Passing 1,500' AGL the FMS will check for auto land conditions; you may execute an auto land on this approach. If all conditions are met for auto land, you will see the text LAND 3 indicated on the PFD below the FMA. This indicates that auto land conditions have been met and you will see in the PFD FMA that ROLLOUT and FLARE modes become armed.



You should be prepared to disconnect the auto throttle during flare, which you can do either with the A/T ARM switches on the Glareshield MCP, or with the side button on the throttles. If using the side button on the throttles, first highlight the throttles and then left click to view the button clicking options for the throttles with tooltips on.





Once flare mode becomes active promptly disconnect the auto-throttle and bring the thrust to idle in preparation for engaging reverse thrust upon touchdown.

Upon touchdown, engage reverse thrust. Rollout mode will use rudder and nosewheel steering to maintain runway centerline and the autopilot will remain engaged until deactivated. As you slow below 60 knots, return thrust to idle and disconnect the autopilot to take manual control of steering. Hold down the brakes until autobrake disengages to take manual control of the braking.

## **Taxi and Parking**

Exit the runway and complete the below checklist. Taxi to the gate.

### **After Landing – Abbreviated Checklist**

Overhead Lights: Landing Lights	Off
Overhead Lights: Strobe Lights	Off
Overhead Lights: Taxi/Turn Off Lights	As required
Autobrake	Off
Flaps	Up
Pedestal: Speed Brake	Retract
Glareshield MCP: AP	Off
Glareshield MCP: A/T Arm Switch	Off
Glareshield MCP: F/D	Off

Upon reaching the gate, park at the gate, set the parking brake and then select both engines FUEL CONTROL switches to CUTOFF to shut down the engines.

Once the engines have spooled down, turn off the beacon light and connect external power, if available.

## **747 Fuel System Addendum**

Here is some extra information about how to manage the 747 fuel system, which requires more hands on for longer flights.

The 747-400 LCF has four main fuel tanks, a center wing tank, and two reserve tanks.

### **Fueling priority**

The plane should be fueled in the following order: Main tanks equally -> Main 1&4 full, fill main 2&3 -> center -> reserve as needed.

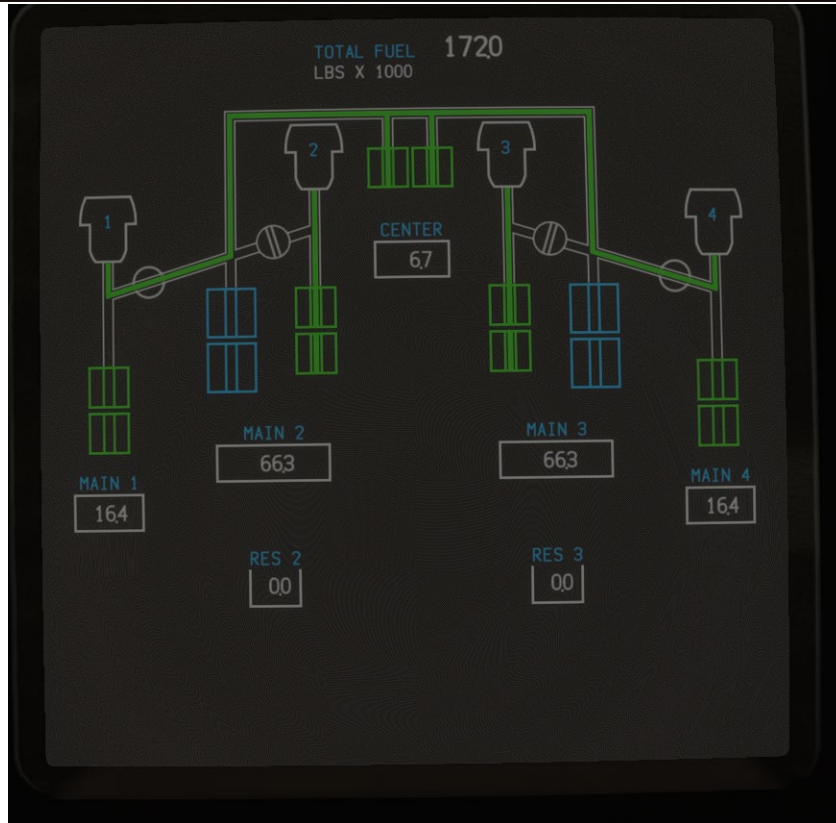
The reserves can be used to reduce wing flex on takeoff.

### **Stages in flight**

Every flight has a progression through several stages as fuel is used from the tanks. Assuming that, when starting the flight, every tank contained fuel, the plane would first use fuel from the center tank, then the inboard main tanks (until all main tanks have the same amount), then every main tank equally. With shorter routes, center tank would not be in use, or the flight might start in a tank-to-engine state - in this case, some of the following stages would be skipped.

## Fuel in center tank

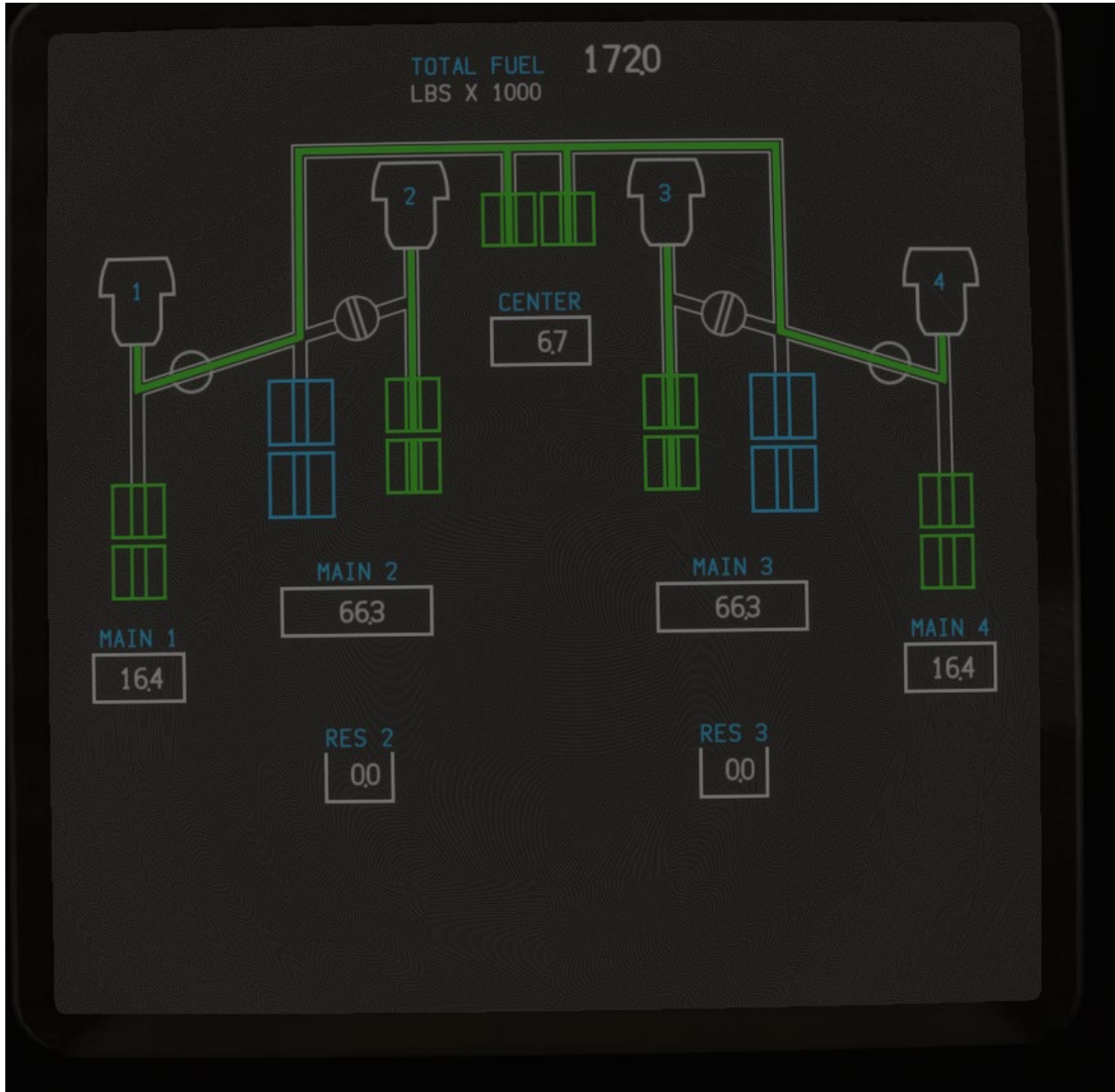
During flight, fuel in the center tank would be used first. A "FUEL LOW CTR" EICAS message will appear when the threshold is reached to turn the pumps off. It is possible for this message to appear in climb, then after reaching cruise phase, a "FUEL OVD CTR" EICAS message would prompt the user to turn them back on until reaching a lower threshold. This is normal: the threshold during climb is higher to protect the pumps at steeper attitudes. In this phase, the center pumps will feed all four engines. All main pumps, override pumps and center pumps should be on. If/when the center tank is empty, the center pumps should be turned off.





## Takeoff configuration with fuel in the center tank

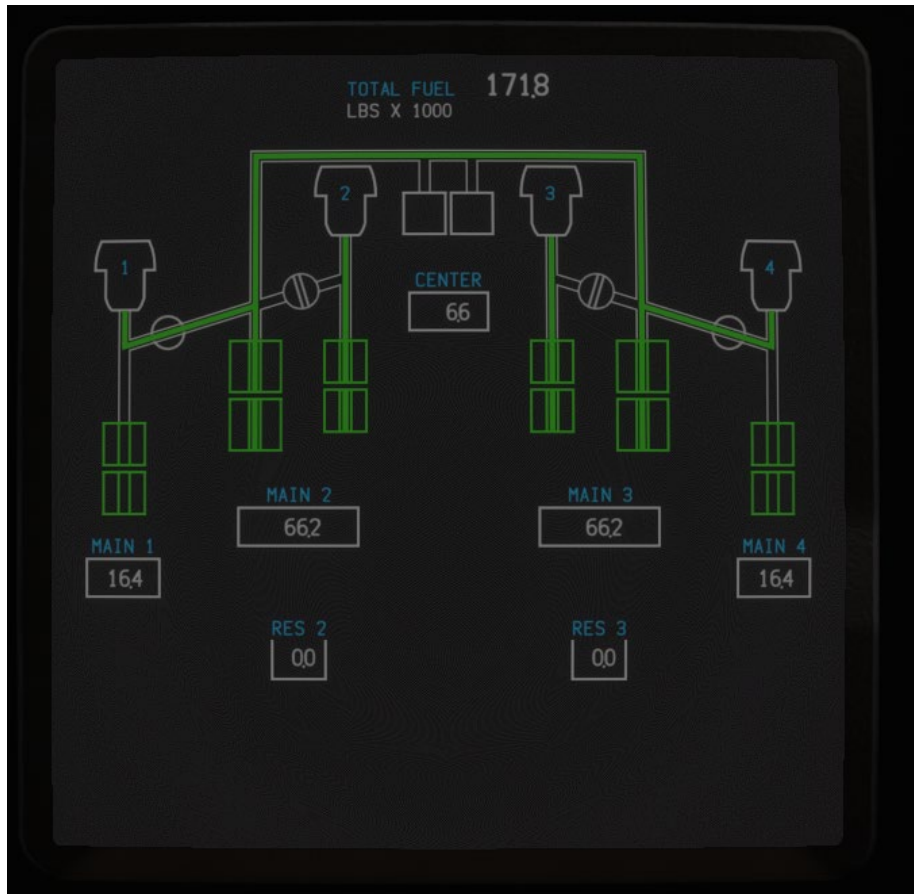
If there is fuel in the center tank on takeoff, every pump switch should be turned on and the system will automatically close crossfeed valves 2 and 3, as well as command the override pumps off (they will be "armed", cyan). The override pumps will remain armed while the center tank feeds the engines. The crossfeed valves will be automatically opened after takeoff.



## Center tank empty

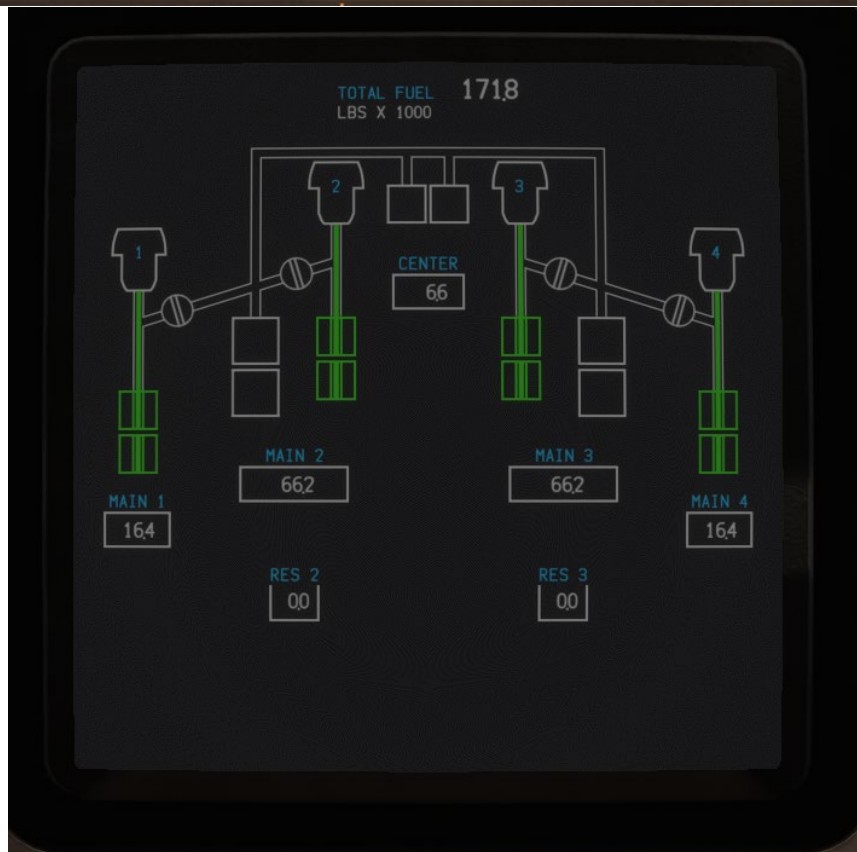
When the center tank is empty, but the inboard mains (2&3) have more fuel than the outboards, the override pumps, using a higher pressure than the regular main pumps, will feed all four engines through the crossfeed valves. In this stage, crossfeed 1 & 4 should be open. Crossfeeds 2&3 are automatic (their switches are under a guard cover), and should never be closed under normal circumstances.





## Tank-to-Engine

When the inboard mains have reached a fuel level that is equal to the outboard main + reserve tank quantity, and the center and stab tanks are also empty, the plane has reached the tank to engine state ("FUEL TANK/ENG" on the EICAS). When that happens, the override pumps must be turned off and crossfeed 1&4 closed. When this is done, each main tank will feed its corresponding engine directly. The plane should stay in this state until landing.



## **Reserve tanks**

The fuel in the reserve tanks will be gravity transferred automatically into the inboard mains (2&3) when their fuel level falls below 13 400 lbs.

# Procedures

## Electrical Power Up

Accomplish the following procedure to permit safe application of electrical power.		
BATTERY switch	ON	Verify OFF light extinguished.
STANDBY POWER selector	AUTO	
Hydraulic DEMAND pump selectors	OFF	
ALTERNATE FLAPS selector	OFF	
Landing gear lever	DN	
Flap position indication and flap lever	Agree	
Electrical power	Establish	
BUS TIE switches	AUTO	
If external power desired:		
External power 1 and/or 2 AVAIL Lights	Illuminated	
EXTERNAL POWER 1 and/or EXTERNAL POWER 2 switches	Push	Verify ON light(s) illuminated.

## Preflight Procedure – First Officer

This procedure assumes the supplementary electrical power up procedure has been accomplished and electrical power is established.		
Maintenance documents	Check	
Circuit breakers (P6)	Check	
Emergency equipment	Check	
Fire extinguisher	Checked and stowed	Check trigger safety pin in place, handle safety wired, bottle pressure in green band.
Portable Oxygen Bottle	Checked and stowed	Verify pressure in green band and face mask attached.
Crash axe	Stowed	
First aid kit	Stowed	Verify first aid kit seal in place.
Smoke goggles	Stowed	
Life vests	Stowed	Verify vests in place.
Hatch	Closed and locked	
Smoke evacuation handle	IN	
Emergency escape devices	Stowed	
GROUND TESTS switch	NORM (guard closed)	
FLIGHT CONTROL HYDRAULIC POWER switches	NORM (guard closed)	Verify VALVE CLOSED lights extinguished.
GENERATOR FIELD MANUAL RESET switches	Guard closed	Verify FIELD OFF lights extinguished.
SPLIT SYSTEM BREAKER switch	Guard closed	
IRS ON BAT light	Extinguished	
ELECTRONIC ENGINE CONTROL MAINTENANCE POWER switches	NORM (guards closed)	
CENTER WING TANK SCAVENGE PUMP switch	OFF (guard closed)	
RESERVE 2 & 3 TRANSFER switch	CLOSE (guard closed)	
Circuit Breakers (P7)	Check	

ELECTRONIC ENGINE CONTROL switches	NORM	Verify ALTN lights extinguished.
IRS selectors	OFF, then NAV	
Electrical panel		
STANDBY POWER selector	AUTO	
UTILITY power switches	ON	Verify OFF lights extinguished.
BATTERY switch	ON	Verify OFF light extinguished.
BUS TIE switches	AUTO	Verify ISLN lights extinguished.
GENERATOR CONTROL switches	ON	Verify OFF and DRIVE lights illuminated.
HYDRAULIC panel		
Hydraulic SYS FAULT and demand pump PRESS lights	Illuminated	
DEMAND pump selectors	OFF	
ENGINE pump switches	ON	Verify engine pump PRESS lights illuminated.
EMERGENCY LIGHTS switch	ARMED	
OBSERVER'S AUDIO SYSTEM switch	NORM	
SERVICE INTERPHONE switch	OFF	
FUEL TRANSFER MAIN 1 AND 4 switch	OFF	
Fire Panel		
Engine fire switches	IN	
BTL A DISCH and BTL B DISCH lights	Extinguished	
CARGO FIRE DISCH light	Extinguished	
CARGO FIRE ARM switches	OFF	Verify FWD and AFT lights extinguished.
Engine START panel		
START switches	In, Extinguished	
STANDBY IGNITION selector	NORM	
CONTINUOUS IGNITION switch	OFF	
AUTO IGNITION selector	SINGLE	
AUTOSTART switch	ON	
FUEL JETTISON panel		
Fuel jettison selector - OFF		
Fuel jettison NOZZLE valve switches - Off		
Verify VALVE light extinguished.		
Fuel panel		
All X FEED valve switches	On	Verify VALVE lights extinguished.
All fuel pump switches	Off	
Main pump PRESS lights	Illuminated	Override 2 and 3 pumps, center pumps, and stabilizer pumps PRESS lights extinguished.
Anti-ice panel		
NACELLE ANTI-ICE switches	Auto	
WING ANTI-ICE switch	Auto	
Windshield protection panel		
WINDOW HEAT switches - ON	On	Verify INOP lights extinguished.
Windshield WIPER selectors - OFF	Off	
PASSENGER OXYGEN switch	NORM (guard closed)	

YAW DAMPER switches	ON	INOP lights remain illuminated until first IRU aligns.
Cabin Altitude Panel		
OUTFLOW VALVES - OPEN	Open	Verify outflow valves OPEN.
LANDING ALTITUDE switch	Auto	
Outflow valve manual switches	Off	
Cabin Altitude AUTO SELECTOR	Norm	
ECS panel		
PASSENGER TEMPERATURE selector	Auto	
FLIGHT DECK TEMPERATURE selector	Auto	
ZONE SYS FAULT light	Extinguished	
TRIM AIR switch	On	
UPPER and LOWER RECIRCULATION fan switches	On	
AFT CARGO HEAT switch	Off	
EQUIPMENT COOLING selector	Norm	
HIGH FLOW switch	Off	
Bleed air panel		
Pack SYS FAULT light	Extinguished	
Pack control selectors	NORM	
LEFT and RIGHT ISOLATION valve switches	On	Verify VALVE lights extinguished.
Engine bleed air SYS FAULT lights	Extinguished	
ENGINE BLEED air switches	On	
Lighting panel	Set	
First Officer's FLIGHT DIRECTOR switch	ON	
STATUS display switch	Push	Verify status display appears.
EFIS control panel	Set	
CDU		
IDENT page	Check	Verify airplane model number and engine number displayed. Verify ACTIVE navigation data date current.
POS INIT line select key	Push	
Present position	Enter	Enter present position on SET IRS POS line using most accurate latitude and longitude.
UTC	Check	
PREVIOUS PAGE key	Push	Verify L, C, and R IRS positions correct.
NEXT PAGE key	Push	
ROUTE line select key	Push	Enter route.
ACTIVATE line select key	Push	
EXEC key	Push	
DEP/ARR key	Push	Select runway and SID.
ROUTE line select key	Push	Verify SID and route correct.
EXEC key	Push	
NAV/RAD key	Push	Verify navigation radios set.
INIT REF key	Push	
INDEX line select key	Push	
APPROACH line select key	Push	Verify FLAP/SPEED line blank.



INIT REF key	Push	
Weather radar panel	Set	
Radio tuning panel	Set	Set panel - As desired
Audio panel	Set	Set panel - As desired
Transponder switch	As Required	
Transponder mode selector	STBY	
AUTOBRAKES Selector	RTO	
Crew oxygen panel		
Oxygen mask	Stowed	Verify doors stowed.
Crew oxygen pressure	Check EICAS	Note oxygen pressure.
Reset/test slide lever	Push and Hold	Verify yellow cross appears momentarily in flow indicator.
Emergency/test selector	Push and Hold	Simultaneously push emergency/test selector and reset/test slide lever, verify yellow cross appears continuously in flow indicator.
Emergency/test selector	Release	
Reset/test slide lever	Release	Verify yellow cross no longer appears in flow indicator.
Normal/100% selector	100%	Leave N/100% selector in 100% position.
Crew oxygen pressure	Check EICAS	Verify pressure decreases no more than 30 psi during test and pressure adequate for dispatch.
SOURCE SELECT panel		
FLIGHT DIRECTOR source selector	R	
NAVIGATION source selector	FMC R	
EIU source selector	Auto	
IRS source selector	R	
AIR DATA source selector	R	
Clock	Set	
CRT select panel	Set	
LOWER CRT selector	Norm	
INBOARD CRT selector	Norm	
PFD		
Flight mode annunciation	Check	Verify autothrottle mode blank. Verify roll mode TO/GA. Verify pitch mode TO/GA. Verify AFDS status FD.
Displays	Normal	Verify no flags displayed. Verify NO V SPD flag displayed until V-speeds selected.
Heading	Check	
Altimeter	Set	
ND		
Heading/Track	Displayed, Correct	
Route	Displayed, Correct	
Displays	Norma	Verify no flags displayed.
GROUND PROXIMITY panel		
Ground PROX light	Extinguished	

Ground proximity FLAP OVERRIDE switch	Off	
Ground proximity CONFIGURATION	Check	
GEAR OVERRIDE switch	Off	
Alternate flaps and gear		
Landing gear lever	Down	
ALTERNATE FLAPS selector	Off	
Alternate flaps ARM switch	Off	
ALTERNATE GEAR EXTEND switches	Off	
EIU selector	AUTO	
HEADING reference switch	NORM	
FMC master selector	L	
Status display		
Hydraulic quantity - RF not displayed	Check	RF not displayed
Oxygen pressure - Sufficient for flight	Check	Sufficient for flight
Status messages - Check	Check	
Seat	Adjust	Adjust seat to obtain optimum eye reference position.
WARNING: Do not place objects between pilot's seat and aisle stand. Injury can occur when the seat is adjusted forward.		
Rudder pedals	Adjust	Adjust to permit full rudder pedal and brake application.
Accomplish BEFORE START checklist to "CLEARED FOR START".		

## Preflight Procedure – Captain

EFIS control panel	Set	
Mode control panel	Set	
Captain's FLIGHT DIRECTOR switch	On	
AUTOTHROTTLE ARM switch	Arm	
BANK LIMIT selector	Auto	
Autopilot DISENGAGE bar	Up	
CDU		
Active Navigation Data Date	Check	
POSITION INITIALIZATION line select key	Push	
Present Position	Check	
UTC	Check	
ROUTE line select key	Push	Verify correct route.
INIT REF key	Push	
INDEX line select key	Push	
APPROACH line select key	Push	Verify FLAP/SPEED line blank.
INIT REF key	Push	
PARKING BRAKE	Set	Verify PARK BRAKE SET message displayed. Note: Accumulator pressure may be insufficient to prevent airplane from moving.
SPEEDBRAKE lever	DN	
Reverse thrust levers	Down	
Thrust levers	Closed	

FUEL CONTROL switches	CUTOFF	
STABILIZER TRIM cutout switches	AUTO (guards closed)	
Radio tuning panel	Set	OFF light - Extinguished, set as desired
Audio panel	Set	Set panel - As desired
Passenger signs		
NO SMOKING selector	Auto or On	
SEATBELTS selector	Auto	
Emergency evacuation COMMAND switch	ARM	
Crew oxygen panel		
Oxygen mask	Stowed	Verify doors stowed.
Crew oxygen pressure	Check EICAS	Note oxygen pressure.
Reset/test slide lever	Push and Hold	Verify yellow cross appears momentarily in flow indicator.
Emergency/test selector	Push and Hold	Simultaneously push emergency/test selector and reset/test slide lever, verify yellow cross appears continuously in flow indicator.
Emergency/test selector	Release	
Reset/test slide lever	Release	Verify yellow cross no longer appears in flow indicator.
Normal/100% selector	100%	Leave N/100% selector in 100% position.
Crew oxygen pressure - Check EICAS	Check EICAS	Verify pressure decreases no more than 30 psi during test and pressure adequate for dispatch.
SOURCE SELECT panel		
FLIGHT DIRECTOR source selector	L	
NAVIGATION source selector	FMCL	
EIU source selector	Auto	
IRS source selector	L	
AIR DATA source selector	L	
Clock	Set	
CRT select panel	Set	
LOWER CRT selector	Norm	
INBOARD CRT selector	Norm	
PFD		
Flight mode annunciation	Check	Verify autothrottle mode blank. Verify roll mode TO/GA. Verify pitch mode TO/GA. Verify AFDS status FD.
Displays	Normal	Verify no flags displayed. Verify NO V SPD flag displayed until V-speeds selected.
Heading	Check	
Altimeter	Set	
ND		
Heading/Track	Displayed, Correct	
Route	Displayed, Correct	
Displays	Norma	Verify no flags displayed.
Standby attitude indicator		

Caging control	Pull and Release	
Attitude	Correct	Verify no gyro flag.
APPROACH selector	Off	Verify no ILS flags.
Standby airspeed indicator	Check	
Standby altimeter	Check	
Seat	Adjust	Adjust seat to obtain optimum eye reference position.
WARNING: Do not place objects between pilot's seat and aisle stand. Injury can occur when seat adjusted forward.		
Rudder pedals	Adjust	Adjust to permit full rudder pedal and brake application.

## Before Start Procedure

CDU		
Fuel quantity on CDU, manifest, and EICAS	Agree	
Airplane zero fuel weight or gross weight	Enter	
Fuel reserves	Enter	
Cost index	Enter	
Cruise altitude	Enter	
THRUST LIM line select key	Push	Select desired takeoff and climb derate.
TAKEOFF line select key	Push	
Takeoff flap setting	Enter	
Takeoff data	Review	
Takeoff speeds	Select	
CG	Select	
MCP		
IAS/MACH selector – Rotate	Rotate	Set V2 speed in IAS/MACH window.
LNAV switch	As Required	
VNAV switch	Push fuel pump switches for tanks containing	
VNAV	Arm	
Initial heading	Set	
Initial altitude	Set	
Start clearance	Obtain	Obtain clearance to pressurize hydraulic systems and start engines.
Hydraulic demand pump 4 selector	AUX	Verify SYS FAULT light extinguished. PRESS light remains illuminated.
Hydraulic demand pump 1, 2, and 3 selectors	Auto	Verify demand pump PRESS and SYS FAULT lights extinguished.
Fuel tank quantities	Check	
Fuel pump switches	On	Push fuel pump switches for tanks containing fuel to ON. Verify pump PRESS lights extinguished.
Pack control selectors	Set	All packs may be off or one pack may be on for engine start.

BEACON light switch	BOTH	
RECALL switch	Push	
Verify only appropriate alert messages displayed.		
If FUEL TANK/ENG message displayed:		
Verify fuel quantity in tank 2 less than or equal to tank 1, or tank 3 less than or equal to tank 4 (fuel tank-to-engine), or fuel quantity in tank 2 less than or equal to tank 1 plus 500 kgs. and tank 3 less than or equal to tank 4 plus 500 kgs.:		
OVERRIDE pumps 2 and 3 switches	Off	
CROSSFEED valve 1 and 4 switches	Off	Cancel when review completed.
Trim	Set	
Stabilizer trim – ___ UNITS	Set	Set for takeoff. Check in illuminated green band.
Aileron trim	Zero	
Rudder trim	Zero	
Flight controls	Check	
Displace rudder, control wheel, and control column full travel in both directions. Verify freedom of movement, controls return to center, and proper flight control movement on secondary EICAS display.		
Note: Hold nose wheel steering tiller stationary during rudder check to prevent nose wheel movement.		
Secondary ENGINE display switch	Push	Verify secondary engine display appears.
EICAS displays	Check	
Engine indications	Normal	
Accomplish remaining items on BEFORE START checklist.		

## BEFORE START checklist

Flight deck door	Closed and locked
Passenger signs	As Required
MCP	V2, HDG, ALT
Takeoff speeds	V1, VR, V2
CDU preflight	Completed

## Engine Start Procedure

Normal start sequence is 4, 3, 2, 1.		
Two engines may be started simultaneously.		
Captain: Call "START ____."		
First Officer: Pull engine start switch(es).		Observe oil pressure increase. *
Monitor engine displays for start parameters listed below until engine(s) are stabilized at idle:		• N1 rotation and *oil pressure must be indicated by idle N2.
After engine(s) stabilized at idle, repeat procedure to start remaining engines.		
AutoStart takes corrective action for the following non-normal conditions:		
No EGT rise		
Hot start		
Hung start.		

(\*During cold weather starts, initial oil pressure rise may be higher than normal.)

## After Start Procedure

Hydraulic demand pump selectors	AUTO	
NACELLE ANTI-ICE switches	As required	
AFT CARGO HEAT switch	As required	
Pack control selectors	NORM	
RECALL switch	Push	Verify only appropriate alert messages displayed. Cancel when review completed.
CDU	Check	Verify takeoff speeds selected.
Ground equipment	Clear	
Accomplish AFTER START checklist.		



## AFTER START checklist

Anti-ice	As Required
Recall	Checked
Autobrake	RTO
Flight controls	Checked
Ground equipment	Clear

## Before Takeoff Procedure

Obtain taxi clearance
Brief taxi clearance
Release parking brake.
Position Flap lever to takeoff setting.
Accomplish takeoff briefing.
Notify flight attendants.
Accomplish BEFORE TAKEOFF checklist.

## BEFORE TAKEOFF checklist

Flaps	Set for takeoff
-------	-----------------

## Takeoff Procedure

Align airplane with runway
Position Inboard Landing Lights and Strobe Light switches ON.
Position Transponder Mode selector to TA/RA.
Advance Thrust levers to approximately 70% N1 and allow engines to stabilize.
Push TO/GA switch to advance Thrust levers to takeoff thrust, or manually advance Thrust levers to takeoff thrust.
Verify 80 knots.
Rotate at VR.
Establish positive rate of climb.
Call for "GEAR UP" when positive rate of climb established.
When above minimum altitude for autopilot engagement, engage A/P.
Position Flap lever as directed.
Position Landing Gear lever OFF.
Accomplish AFTER TAKEOFF checklist.

## AFTER TAKEOFF checklist

Landing gear	UP and OFF
Flaps	UP

## Climb and Cruise Procedure

Nacelle Anti-ice selectors	Auto
Above 10,000 feet, position Inboard Landing Light switches OFF.	
At transition altitude, set altimeters to standard (29.92/1013).	

## Approach and Landing Procedure

Recall and review all messages.
Select VREF speed.
Verify correct arrival and approach procedures are selected.
Set approach DH or MDA on PFD as required.
Complete approach brief.
At transition level, set all altimeters
Set Autobrakes selector to desired brake setting.
Accomplish APPROACH checklist.
At 10,000 feet, position Inboard Landing Light switches ON.
Position Flap lever as directed.
Position Landing Gear lever DN and flap lever to 20.
Position Flap lever as directed.
At final approach fix/OM, verify crossing altitude.
Accomplish LANDING checklist.
Monitor approach progress. Verify autoland status.

## Go-Around Procedure

Push TO/GA switch.
Call for "FLAPS 20."
Verify positive rate of climb, then position Landing Gear lever UP.
Above 400 feet radio altitude, select LNAV.
Position Flap lever as directed.
Position Landing Gear lever OFF.
Accomplish AFTER TAKEOFF checklist.

## Landing Roll Procedure

Monitor rollout progress and proper autobrake operation.
Verify Thrust levers closed and Speedbrake lever up.
Without delay, raise Reverse Thrust levers to idle detent, hold light pressure until release, and then apply reverse thrust as required
By 60 knots, initiate movement of Reverse Thrust levers to reach reverse idle detent prior to taxi speed.
Position levers full down (forward thrust) when engines have decelerated to reverse idle.
Prior to taxi speed, disarm autobrakes and continue manual braking as required.
Disengage autopilot prior to runway turnoff.
WARNING: After reverse thrust is initiated, a full stop landing must be made.

## After Landing Procedure

Accomplish this procedure when clear of the active runway.		
STROBE lights switch	OFF	
INBOARD landing lights switches	OFF	
WEATHER radar switch	OFF	
Speedbrake lever	DN	
Flap lever	UP	
AUTOBRAKES selector	OFF	
Transponder mode selector	STBY	

## Shutdown Procedure

Parking brake	Set	
Electrical power	Establish	
If external power desired:		
External power 1 and/or external power 2	Check	AVAIL lights - Illuminated
EXTERNAL POWER 1 and/or EXTERNAL POWER 2 switches	Push	Verify ON light(s) illuminated.
Hydraulic demand pump 1, 2, and 3 selectors	OFF	
Hydraulic demand pump 4 selector	AUX	
FUEL CONTROL switches	CUTOFF	
SEATBELTS signs selector	OFF	When all passenger doors are in manual mode, place SEATBELT signs selector OFF.
Fuel pump switches	OFF	
NACELLE and WING ANTI-ICE switches	OFF	
BEACON lights switch	OFF	
FLIGHT DIRECTOR switches	OFF	
Status messages	Check	
Parking brake	Release	
When wheel chocks in place, release parking brake.		
Hydraulic demand pump 4 selector	OFF	
Accomplish SHUTDOWN		

## SHUTDOWN checklist

Hydraulic panel	Set
Fuel pumps	Off
Flaps	UP
Parking brake	Set
Fuel control switches	CUTOFF
Weather radar	Off

## Secure Procedure

IRS mode selectors	OFF
EMERGENCY LIGHTS switch	OFF
AFT CARGO HEAT switch	OFF
Pack control selectors	OFF
STANDBY POWER selector	OFF
BATTERY switch	OFF
Accomplish SECURE checklist.	

## SECURE checklist

IRSs	Off
Emergency exit lights	OFF
Packs	OFF